

CHRFAM7A antibody - middle region

Rabbit Polyclonal Antibody

Catalog # AI11003

Product Information

Application	WB
Primary Accession	Q8IUZ4
Other Accession	NM_148911 , NP_683709
Reactivity	Human, Mouse, Rat, Rabbit, Zebrafish, Pig, Dog, Horse, Bovine
Predicted	Human, Mouse, Rat, Zebrafish, Pig, Chicken, Bovine
Host	Rabbit
Clonality	Polyclonal
Calculated MW	35 KDa

Additional Information

Alias Symbol	CHRNA7, CHRNA7-DR1, D-10, MGC120482, MGC120483
Format	Liquid. Purified antibody supplied in 1x PBS buffer with 0.09% (w/v) sodium azide and 2% sucrose.
Reconstitution & Storage	Add 50 ul of distilled water. Final anti-CHRFAM7A antibody concentration is 1 mg/ml in PBS buffer with 2% sucrose. For longer periods of storage, store at 20°C. Avoid repeat freeze-thaw cycles.
Precautions	CHRFAM7A antibody - middle region is for research use only and not for use in diagnostic or therapeutic procedures.

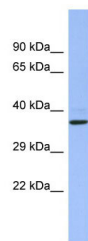
Protein Information

References

Martin, L.F., (2007) Am. J. Med. Genet. B Neuropsychiatr. Genet. 144 (5), 611-614 Reconstitution and Storage: For short term use, store at 2-8°C up to 1 week. For long term storage, store at -20°C in small aliquots to prevent freeze-thaw cycles.

Images

WB Suggested Anti-CHRFAM7A Antibody Titration: 0.2-1
µg/ml
ELISA Titer: 1:1562500
Positive Control: Human kidney



Please note: All products are 'FOR RESEARCH USE ONLY. NOT FOR USE IN DIAGNOSTIC OR THERAPEUTIC PROCEDURES'.