

MCM7 antibody - middle region

Rabbit Polyclonal Antibody

Catalog # AI11011

Product Information

Application	WB, IHC
Primary Accession	P33993
Other Accession	NM_005916 , NP_005907
Reactivity	Human, Rat, Rabbit, Horse, Bovine
Predicted	Human, Rat, Rabbit, Bovine
Host	Rabbit
Clonality	Polyclonal
Calculated MW	81308

Additional Information

Gene ID	4176
Alias Symbol Other Names	MCM2, CDC47, P85MCM, P1CDC47, PNAS146, P1.1-MCM3 DNA replication licensing factor MCM7, 3.6.4.12, CDC47 homolog, P1.1-MCM3, MCM7, CDC47, MCM2
Format	Liquid. Purified antibody supplied in 1x PBS buffer with 0.09% (w/v) sodium azide and 2% sucrose.
Reconstitution & Storage	Add 100 ul of distilled water. Final anti-MCM7 antibody concentration is 1 mg/ml in PBS buffer with 2% sucrose. For longer periods of storage, store at 20°C. Avoid repeat freeze-thaw cycles.
Precautions	MCM7 antibody - middle region is for research use only and not for use in diagnostic or therapeutic procedures.

Protein Information

Name	MCM7 (HGNC:6950)
Synonyms	CDC47, MCM2
Function	Acts as a component of the MCM2-7 complex (MCM complex) which is the replicative helicase essential for 'once per cell cycle' DNA replication initiation and elongation in eukaryotic cells. Core component of CDC45-MCM-GINS (CMG) helicase, the molecular machine that unwinds template DNA during replication, and around which the replisome is built (PubMed: 25661590 , PubMed: 32453425 , PubMed: 34694004 , PubMed: 34700328 , PubMed: 35585232 , PubMed: 9305914). The active ATPase sites in the MCM2-7 ring are formed through the interaction surfaces of two neighboring subunits

such that a critical structure of a conserved arginine finger motif is provided in trans relative to the ATP-binding site of the Walker A box of the adjacent subunit. The six ATPase active sites, however, are likely to contribute differentially to the complex helicase activity (PubMed:[32453425](#)). Required for S-phase checkpoint activation upon UV-induced damage.

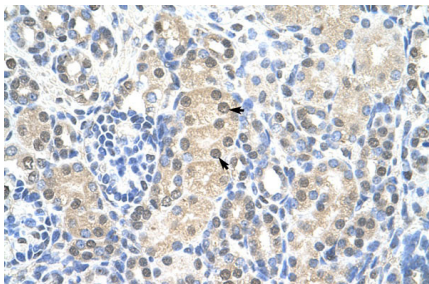
Cellular Location

Nucleus. Chromosome. Note=Associated with chromatin before the formation of nuclei and detaches from it as DNA replication progresses.

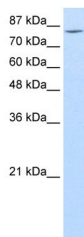
References

Ren,B., (2006) Oncogene 25 (7), 1090-1098
Reconstitution and Storage:For short term use, store at 2-8C up to 1 week. For long term storage, store at -20C in small aliquots to prevent freeze-thaw cycles.

Images



Human kidney



WB Suggested Anti-MCM7 Antibody Titration: 1.25µg/ml
Positive Control: Daudi cell lysate
MCM7 is strongly supported by BioGPS gene expression data to be expressed in Human Daudi cells

Please note: All products are 'FOR RESEARCH USE ONLY. NOT FOR USE IN DIAGNOSTIC OR THERAPEUTIC PROCEDURES'.