

MCM4 antibody - N-terminal region

Rabbit Polyclonal Antibody

Catalog # AI11013

Product Information

Application	WB
Primary Accession	P33991
Other Accession	NM_182746 , NP_877423
Reactivity	Human, Mouse, Rat, Rabbit, Dog, Horse, Bovine
Predicted	Human, Mouse, Rat, Rabbit, Bovine
Host	Rabbit
Clonality	Polyclonal
Calculated MW	96558

Additional Information

Gene ID	4173
Alias Symbol	CDC21, CDC54, hCdc21, P1-CDC21
Other Names	DNA replication licensing factor MCM4, 3.6.4.12, CDC21 homolog, P1-CDC21, MCM4, CDC21
Format	Liquid. Purified antibody supplied in 1x PBS buffer with 0.09% (w/v) sodium azide and 2% sucrose.
Reconstitution & Storage	Add 100 ul of distilled water. Final anti-MCM4 antibody concentration is 1 mg/ml in PBS buffer with 2% sucrose. For longer periods of storage, store at 20°C. Avoid repeat freeze-thaw cycles.
Precautions	MCM4 antibody - N-terminal region is for research use only and not for use in diagnostic or therapeutic procedures.

Protein Information

Name	MCM4 (HGNC:6947)
Synonyms	CDC21
Function	Acts as a component of the MCM2-7 complex (MCM complex) which is the replicative helicase essential for 'once per cell cycle' DNA replication initiation and elongation in eukaryotic cells. Core component of CDC45-MCM-GINS (CMG) helicase, the molecular machine that unwinds template DNA during replication, and around which the replisome is built (PubMed: 16899510 , PubMed: 25661590 , PubMed: 32453425 , PubMed: 34694004 , PubMed: 34700328 , PubMed: 35585232 , PubMed: 9305914). The active ATPase sites in the MCM2-7 ring are formed through the interaction surfaces of two

neighboring subunits such that a critical structure of a conserved arginine finger motif is provided in trans relative to the ATP-binding site of the Walker A box of the adjacent subunit. The six ATPase active sites, however, are likely to contribute differentially to the complex helicase activity (PubMed:[16899510](#), PubMed:[25661590](#), PubMed:[32453425](#), PubMed:[9305914](#)).

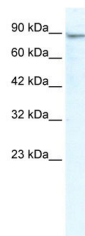
Cellular Location

Nucleus. Chromosome. Note=Associated with chromatin before the formation of nuclei and detaches from it as DNA replication progresses.

References

Ishimi,Y., et al., (2003) J. Biol. Chem. 278 (27), 24644-24650 Reconstitution and Storage: For short term use, store at 2-8C up to 1 week. For long term storage, store at -20C in small aliquots to prevent freeze-thaw cycles.

Images



WB Suggested Anti-MCM4 Antibody Titration: 2.5µg/ml
ELISA Titer: 1:62500
Positive Control: Jurkat cell lysate
MCM4 is strongly supported by BioGPS gene expression data to be expressed in Human Jurkat cells

Please note: All products are 'FOR RESEARCH USE ONLY. NOT FOR USE IN DIAGNOSTIC OR THERAPEUTIC PROCEDURES'.