

Kl antibody - N-terminal region

Rabbit Polyclonal Antibody
Catalog # AI11015

Product Information

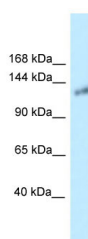
Application	WB
Primary Accession	O35082
Other Accession	NM_013823 , NP_038851
Reactivity	Human, Mouse, Rat, Rabbit, Pig, Horse, Bovine
Predicted	Human, Mouse, Rat, Rabbit, Pig, Chicken, Bovine
Host	Rabbit
Clonality	Polyclonal
Calculated MW	116 kDa

Additional Information

Alias Symbol	alpha-kl
Other Names	Klotho, 3.2.1.31, Klotho peptide, Kl
Format	Liquid. Purified antibody supplied in 1x PBS buffer with 0.09% (w/v) sodium azide and 2% sucrose.
Reconstitution & Storage	Add 50 ul of distilled water. Final anti-Kl antibody concentration is 1 mg/ml in PBS buffer with 2% sucrose. For longer periods of storage, store at 20°C. Avoid repeat freeze-thaw cycles.
Precautions	Kl antibody - N-terminal region is for research use only and not for use in diagnostic or therapeutic procedures.

Protein Information

Images



WB Suggested Anti-Kl Antibody Titration: 1.0 µg/ml
Positive Control: Mouse Small Intestine

Please note: All products are 'FOR RESEARCH USE ONLY. NOT FOR USE IN DIAGNOSTIC OR THERAPEUTIC PROCEDURES'.