

# MCM8 antibody - N-terminal region

Rabbit Polyclonal Antibody

Catalog # AI11020

## Product Information

<b>Application</b>	WB
<b>Primary Accession</b>	<a href="#">Q9UJA3</a>
<b>Other Accession</b>	<a href="#">NM_032485</a> , <a href="#">NP_115874</a>
<b>Reactivity</b>	Human, Mouse, Rat, Rabbit, Zebrafish, Dog, Horse, Bovine
<b>Predicted</b>	Human, Mouse, Rat, Rabbit, Pig, Chicken, Dog, Horse, Bovine
<b>Host</b>	Rabbit
<b>Clonality</b>	Polyclonal
<b>Calculated MW</b>	93697

## Additional Information

<b>Gene ID</b>	84515
<b>Alias Symbol</b> <b>Other Names</b>	C20orf154, MGC119522, MGC119523, MGC12866, MGC4816, REC, dj967N21.5 DNA helicase MCM8, 3.6.4.12, Minichromosome maintenance 8, MCM8, C20orf154
<b>Format</b>	Liquid. Purified antibody supplied in 1x PBS buffer with 0.09% (w/v) sodium azide and 2% sucrose.
<b>Reconstitution &amp; Storage</b>	Add 50 ul of distilled water. Final anti-MCM8 antibody concentration is 1 mg/ml in PBS buffer with 2% sucrose. For longer periods of storage, store at 20°C. Avoid repeat freeze-thaw cycles.
<b>Precautions</b>	MCM8 antibody - N-terminal region is for research use only and not for use in diagnostic or therapeutic procedures.

## Protein Information

<b>Name</b>	MCM8
<b>Synonyms</b>	C20orf154
<b>Function</b>	Component of the MCM8-MCM9 complex, a complex involved in the repair of double-stranded DNA breaks (DBSs) and DNA interstrand cross- links (ICLs) by homologous recombination (HR) (PubMed: <a href="#">23401855</a> ). Required for DNA resection by the MRE11-RAD50-NBN/NBS1 (MRN) complex by recruiting the MRN complex to the repair site and by promoting the complex nuclease activity (PubMed: <a href="#">26215093</a> ). Probably by regulating the localization of the MNR complex, indirectly regulates the recruitment of downstream effector RAD51 to DNA damage sites including DBSs and ICLs (PubMed: <a href="#">23401855</a> ). The

MCM8-MCM9 complex is dispensable for DNA replication and S phase progression (PubMed:[23401855](#)). However, may play a non-essential for DNA replication: may be involved in the activation of the prereplicative complex (pre-RC) during G(1) phase by recruiting CDC6 to the origin recognition complex (ORC) (PubMed:[15684404](#)). Probably by regulating HR, plays a key role during gametogenesis (By similarity). Stabilizes MCM9 protein (PubMed:[23401855](#), PubMed:[26215093](#)).

#### Cellular Location

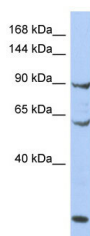
Nucleus. Chromosome. Note=Localizes to nuclear foci (PubMed:26215093). Localizes to double-stranded DNA breaks (PubMed:23401855). Binds chromatin throughout the cell cycle (PubMed:15684404).

#### Tissue Location

Highest levels in placenta, lung and pancreas. Low levels in skeletal muscle and kidney. Expressed in various tumors with highest levels in colon and lung cancers

## Images

---



WB Suggested Anti-MCM8 Antibody Titration: 0.2-1 µg/ml  
ELISA Titer: 1:1562500  
Positive Control: OVCAR-3 cell lysate

Please note: All products are 'FOR RESEARCH USE ONLY. NOT FOR USE IN DIAGNOSTIC OR THERAPEUTIC PROCEDURES'.