

KCTD19 antibody - N-terminal region

Rabbit Polyclonal Antibody

Catalog # AI11028

Product Information

Application	WB
Primary Accession	Q17RG1
Other Accession	XM_085367 , XP_085367
Reactivity	Human, Mouse, Rat, Rabbit, Pig, Horse, Bovine
Predicted	Rat, Rabbit, Pig, Horse
Host	Rabbit
Clonality	Polyclonal
Calculated MW	104938

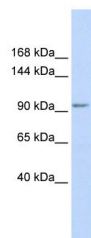
Additional Information

Gene ID	146212
Alias Symbol	FLJ40162
Other Names	BTB/POZ domain-containing protein KCTD19, KCTD19
Format	Liquid. Purified antibody supplied in 1x PBS buffer with 0.09% (w/v) sodium azide and 2% sucrose.
Reconstitution & Storage	Add 50 ul of distilled water. Final anti-KCTD19 antibody concentration is 1 mg/ml in PBS buffer with 2% sucrose. For longer periods of storage, store at 20°C. Avoid repeat freeze-thaw cycles.
Precautions	KCTD19 antibody - N-terminal region is for research use only and not for use in diagnostic or therapeutic procedures.

Protein Information

Name	KCTD19
Function	Transcription regulator which is essential for male fertility and for the completion of meiotic prophase in spermatocytes. Regulates progression of the pachytene stage of meiotic prophase and promotes the transcriptional activation activity ZNF541. Required for the organization of chromosomes during metaphase I.
Cellular Location	Nucleus {ECO:0000250 UniProtKB:Q562E2}.

Images



WB Suggested Anti-KCTD19 Antibody Titration: 0.2-1
µg/ml
ELISA Titer: 1:12500
Positive Control: Human Muscle

Please note: All products are 'FOR RESEARCH USE ONLY. NOT FOR USE IN DIAGNOSTIC OR THERAPEUTIC PROCEDURES'.