

KCTD11 antibody - N-terminal region

Rabbit Polyclonal Antibody

Catalog # AI11029

Product Information

Application	WB
Primary Accession	Q693B1
Other Accession	NM_001002914 , NP_001002914
Reactivity	Human, Mouse
Predicted	Human
Host	Rabbit
Clonality	Polyclonal
Calculated MW	25887

Additional Information

Gene ID	147040
Alias Symbol	REN, KCASH1, C17orf36, REN/KCTD11
Other Names	BTB/POZ domain-containing protein KCTD11, KCTD11, C17orf36, REN
Format	Liquid. Purified antibody supplied in 1x PBS buffer with 0.09% (w/v) sodium azide and 2% sucrose.
Reconstitution & Storage	Add 100 ul of distilled water. Final anti-KCTD11 antibody concentration is 1 mg/ml in PBS buffer with 2% sucrose. For longer periods of storage, store at 20°C. Avoid repeat freeze-thaw cycles.
Precautions	KCTD11 antibody - N-terminal region is for research use only and not for use in diagnostic or therapeutic procedures.

Protein Information

Name	KCTD11
Synonyms	C17orf36, REN
Function	Plays a role as a marker and a regulator of neuronal differentiation; Up-regulated by a variety of neurogenic signals, such as retinoic acid, epidermal growth factor/EGF and NGFB/nerve growth factor. Induces apoptosis, growth arrest and the expression of cyclin- dependent kinase inhibitor CDKN1B. Plays a role as a tumor repressor and inhibits cell growth and tumorigenicity of medulloblastoma (MDB). Acts as a probable substrate-specific adapter for a BCR (BTB-CUL3-RBX1) E3 ubiquitin-protein ligase complex towards HDAC1. Functions as antagonist of the Hedgehog pathway on cell proliferation and differentiation by affecting the nuclear

transfer of transcription factor GLI1, thus maintaining cerebellar granule cells in undifferentiated state, this effect probably occurs via HDAC1 down-regulation, keeping GLI1 acetylated and inactive. When knock-down, Hedgehog antagonism is impaired and proliferation of granule cells is sustained. Activates the caspase cascade.

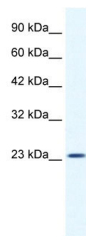
Tissue Location

Higher expression in cerebellum than in whole brain and lower expression in medulloblastoma.

References

Di,M., et al., (2004) Proc. Natl. Acad. Sci. U.S.A. 101 (29), 10833-10838
Reconstitution and Storage: For short term use, store at 2-8C up to 1 week. For long term storage, store at -20C in small aliquots to prevent freeze-thaw cycles.

Images



WB Suggested Anti-KCTD11 Antibody Titration: 1.25µg/ml
ELISA Titer: 1:62500
Positive Control: HepG2 cell lysate

Please note: All products are 'FOR RESEARCH USE ONLY. NOT FOR USE IN DIAGNOSTIC OR THERAPEUTIC PROCEDURES'.