

Prrxl1 Antibody - N-terminal region

Rabbit Polyclonal Antibody

Catalog # AI11031

Product Information

Application	WB
Primary Accession	Q62798
Other Accession	NM_145767 , NP_665710
Reactivity	Human, Mouse, Rat, Rabbit, Zebrafish, Pig, Dog, Horse, Bovine
Predicted	Human, Mouse, Rat, Rabbit, Zebrafish, Pig, Horse
Host	Rabbit
Clonality	Polyclonal
Calculated MW	28621

Additional Information

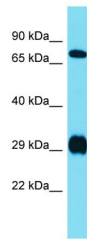
Gene ID	252880
Alias Symbol Other Names	Drg11, Drgx, Prrxl1 Dorsal root ganglia homeobox protein, Dorsal root ganglion 11, Homeobox protein DRG11, Paired-related homeobox protein-like 1, Drgx, Drg11, Prrxl1
Format	Liquid. Purified antibody supplied in 1x PBS buffer with 0.09% (w/v) sodium azide and 2% sucrose.
Reconstitution & Storage	Add 50 ul of distilled water. Final anti-Prrxl1 antibody concentration is 1 mg/ml in PBS buffer with 2% sucrose. For longer periods of storage, store at 20°C. Avoid repeat freeze-thaw cycles.
Precautions	Prrxl1 Antibody - N-terminal region is for research use only and not for use in diagnostic or therapeutic procedures.

Protein Information

Name	Drgx
Synonyms	Drg11, Prrxl1
Function	Transcription factor required for the formation of correct projections from nociceptive sensory neurons to the dorsal horn of the spinal cord and normal perception of pain.
Cellular Location	Nucleus {ECO:0000255 PROSITE-ProRule:PRU00108, ECO:0000255 PROSITE-ProRule:PRU00138}
Tissue Location	Expressed in most sensory neurons but not in autonomic neurons. Also

expressed in the dorsal horn of the spinal cord

Images



Host: Rabbit
Target Name: Prrxl1
Sample Tissue: Rat Liver lysates
Antibody Dilution: 1.0µg/ml

Please note: All products are 'FOR RESEARCH USE ONLY. NOT FOR USE IN DIAGNOSTIC OR THERAPEUTIC PROCEDURES'.