

Alx4 antibody - middle region

Rabbit Polyclonal Antibody
Catalog # AI11036

Product Information

Application	WB
Primary Accession	O35137
Other Accession	NM_007442 , NP_031468
Reactivity	Human, Mouse, Rat, Dog, Horse, Bovine
Predicted	Mouse, Rat, Pig, Chicken, Bovine
Host	Rabbit
Clonality	Polyclonal
Calculated MW	42763

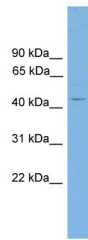
Additional Information

Gene ID	11695
Alias Symbol	Ist
Other Names	Homeobox protein aristaless-like 4, ALX-4, Alx4
Format	Liquid. Purified antibody supplied in 1x PBS buffer with 0.09% (w/v) sodium azide and 2% sucrose.
Reconstitution & Storage	Add 50 ul of distilled water. Final anti-Alx4 antibody concentration is 1 mg/ml in PBS buffer with 2% sucrose. For longer periods of storage, store at 20°C. Avoid repeat freeze-thaw cycles.
Precautions	Alx4 antibody - middle region is for research use only and not for use in diagnostic or therapeutic procedures.

Protein Information

Name	Alx4
Function	Transcription factor involved in skull and limb development.
Cellular Location	Nucleus.
Tissue Location	Expressed in osteoblasts. Not expressed in brain, heart, intestine, kidney, liver, muscle, spleen and testis

Images



WB Suggested Anti-Alx4 Antibody Titration: 0.2-1 $\mu\text{g/ml}$
Positive Control: Mouse Brain

Please note: All products are 'FOR RESEARCH USE ONLY. NOT FOR USE IN DIAGNOSTIC OR THERAPEUTIC PROCEDURES'.