

# Cdx4 antibody - C-terminal region

Rabbit Polyclonal Antibody

Catalog # AI11040

## Product Information

---

<b>Application</b>	WB
<b>Primary Accession</b>	<a href="#">Q07424</a>
<b>Other Accession</b>	<a href="#">NM_007674</a> , <a href="#">NP_031700</a>
<b>Reactivity</b>	Human, Mouse, Rat, Rabbit, Pig, Dog, Horse, Bovine
<b>Predicted</b>	Human, Mouse, Rat, Chicken, Dog, Bovine
<b>Host</b>	Rabbit
<b>Clonality</b>	Polyclonal
<b>Calculated MW</b>	30465

## Additional Information

---

<b>Gene ID</b>	12592
<b>Alias Symbol</b>	Cdx-3, Cdx-4, Cdx3
<b>Other Names</b>	Homeobox protein CDX-4, Caudal-type homeobox protein 4, Cdx4, Cdx-4
<b>Format</b>	Liquid. Purified antibody supplied in 1x PBS buffer with 0.09% (w/v) sodium azide and 2% sucrose.
<b>Reconstitution &amp; Storage</b>	Add 50 ul of distilled water. Final anti-Cdx4 antibody concentration is 1 mg/ml in PBS buffer with 2% sucrose. For longer periods of storage, store at 20°C. Avoid repeat freeze-thaw cycles.
<b>Precautions</b>	Cdx4 antibody - C-terminal region is for research use only and not for use in diagnostic or therapeutic procedures.

## Protein Information

---

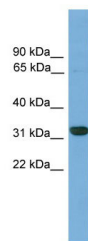
<b>Name</b>	Cdx4
<b>Synonyms</b>	Cdx-4
<b>Cellular Location</b>	Nucleus.

## Images

---

WB Suggested Anti-Cdx4 Antibody Titration: 0.2-1 µg/ml  
ELISA Titer: 1:312500

## Positive Control: Mouse Small Intestine



Please note: All products are 'FOR RESEARCH USE ONLY. NOT FOR USE IN DIAGNOSTIC OR THERAPEUTIC PROCEDURES'.