

Foxc1 antibody - N-terminal region

Rabbit Polyclonal Antibody

Catalog # AI11068

Product Information

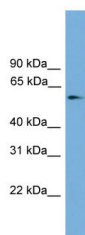
Application	WB
Primary Accession	Q9QWR9
Other Accession	NM_008592 , NP_032618
Reactivity	Human, Mouse, Rat, Zebrafish, Dog, Horse, Bovine
Predicted	Human, Mouse, Zebrafish
Host	Rabbit
Clonality	Polyclonal
Calculated MW	57 kDa

Additional Information

Alias Symbol	FREAC3, Fkh1, Mf1, Mf4, ch, fkh-1, frkhda
Format	Liquid. Purified antibody supplied in 1x PBS buffer with 0.09% (w/v) sodium azide and 2% sucrose.
Reconstitution & Storage	Add 50 ul of distilled water. Final anti-Foxc1 antibody concentration is 1 mg/ml in PBS buffer with 2% sucrose. For longer periods of storage, store at 20°C. Avoid repeat freeze-thaw cycles.
Precautions	Foxc1 antibody - N-terminal region is for research use only and not for use in diagnostic or therapeutic procedures.

Protein Information

Images



WB Suggested Anti-Foxc1 Antibody Titration: 0.2-1 µg/ml
Positive Control: NIH/3T3 cell lysate