

Cdx1 antibody - C-terminal region

Rabbit Polyclonal Antibody

Catalog # AI11105

Product Information

Application	WB
Primary Accession	P18111
Other Accession	NM_009880 , NP_034010
Reactivity	Mouse, Rat, Rabbit, Pig, Horse, Bovine
Predicted	Mouse, Rat, Rabbit, Bovine
Host	Rabbit
Clonality	Polyclonal
Calculated MW	28436

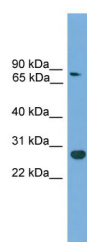
Additional Information

Gene ID	12590
Alias Symbol	Cdx, Cdx-1
Other Names	Homeobox protein CDX-1, Caudal-type homeobox protein 1, Cdx1, Cdx-1
Format	Liquid. Purified antibody supplied in 1x PBS buffer with 0.09% (w/v) sodium azide and 2% sucrose.
Reconstitution & Storage	Add 50 ul of distilled water. Final anti-Cdx1 antibody concentration is 1 mg/ml in PBS buffer with 2% sucrose. For longer periods of storage, store at 20°C. Avoid repeat freeze-thaw cycles.
Precautions	Cdx1 antibody - C-terminal region is for research use only and not for use in diagnostic or therapeutic procedures.

Protein Information

Name	Cdx1
Synonyms	Cdx-1
Function	Plays a role in transcriptional regulation. Involved in activated KRAS-mediated transcriptional activation of PRKD1 in colorectal cancer (CRC) cells. Binds to the PRKD1 promoter in colorectal cancer (CRC) cells. Could play a role in the terminal differentiation of the intestine. Binds preferentially to methylated DNA.
Cellular Location	Nucleus.
Tissue Location	Intestinal epithelium.

Images



WB Suggested Anti-Cdx1 Antibody Titration: 0.2-1 μ g/ml
Positive Control: Mouse Muscle

Please note: All products are 'FOR RESEARCH USE ONLY. NOT FOR USE IN DIAGNOSTIC OR THERAPEUTIC PROCEDURES'.