

# Eomes antibody - C-terminal region

Rabbit Polyclonal Antibody

Catalog # AI11107

## Product Information

---

<b>Application</b>	WB, IHC
<b>Primary Accession</b>	<a href="#">O54839</a>
<b>Other Accession</b>	<a href="#">NM_010136</a> , <a href="#">NP_034266</a>
<b>Reactivity</b>	Mouse, Rat, Pig, Dog, Bovine
<b>Predicted</b>	Rabbit, Chicken
<b>Host</b>	Rabbit
<b>Clonality</b>	Polyclonal
<b>Calculated MW</b>	74801

## Additional Information

---

<b>Gene ID</b>	13813
<b>Alias Symbol</b>	C77258, Tbr2, TBR-2
<b>Other Names</b>	Eomesodermin homolog, T-box brain protein 2, T-brain-2, TBR-2, Eomes, Tbr2
<b>Format</b>	Liquid. Purified antibody supplied in 1x PBS buffer with 0.09% (w/v) sodium azide and 2% sucrose.
<b>Reconstitution &amp; Storage</b>	Add 50 ul of distilled water. Final anti-Eomes antibody concentration is 1 mg/ml in PBS buffer with 2% sucrose. For longer periods of storage, store at 20°C. Avoid repeat freeze-thaw cycles.
<b>Precautions</b>	Eomes antibody - C-terminal region is for research use only and not for use in diagnostic or therapeutic procedures.

## Protein Information

---

<b>Name</b>	Eomes
<b>Synonyms</b>	Tbr2
<b>Function</b>	Functions as a transcriptional activator playing a crucial role during development. Functions in trophoblast differentiation and later in gastrulation, regulating both mesoderm delamination and endoderm specification (PubMed: <a href="#">10716450</a> ). Plays a role in brain development being required for the specification and the proliferation of the intermediate progenitor cells and their progeny in the cerebral cortex (PubMed: <a href="#">18171685</a> , PubMed: <a href="#">18940588</a> ). Required for differentiation and migration of unipolar dendritic brush cells (PubMed: <a href="#">33488348</a> ). Also involved in the differentiation of CD8+ T-cells during immune response regulating the expression of lytic

effector genes (PubMed:[14605368](#)).

**Cellular Location**

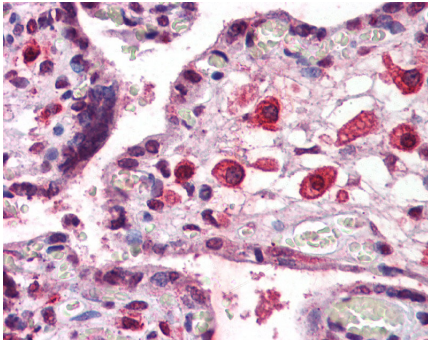
Nucleus.

**Tissue Location**

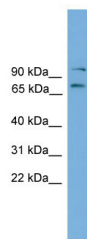
Expressed in CD8+ T-cells.

## Images

---



Immunohistochemistry with Placenta tissue at an antibody concentration of Dilution: 1:200 using anti-Eomes antibody (AI11107)



WB Suggested Anti-Eomes Antibody Titration: 0.2-1 µg/ml  
Positive Control: Mouse Muscle

Please note: All products are 'FOR RESEARCH USE ONLY. NOT FOR USE IN DIAGNOSTIC OR THERAPEUTIC PROCEDURES'.