

# Foxf1a antibody - middle region

Rabbit Polyclonal Antibody

Catalog # AI11111

## Product Information

<b>Application</b>	WB, IHC
<b>Primary Accession</b>	<a href="#">Q61080</a>
<b>Other Accession</b>	<a href="#">NM_010426</a> , <a href="#">NP_034556</a>
<b>Reactivity</b>	Human, Mouse, Rat, Rabbit, Zebrafish, Dog, Horse, Bovine
<b>Predicted</b>	Mouse, Rat, Rabbit, Zebrafish, Pig, Dog, Horse
<b>Host</b>	Rabbit
<b>Clonality</b>	Polyclonal
<b>Calculated MW</b>	39958

## Additional Information

<b>Gene ID</b>	15227
<b>Alias Symbol</b> <b>Other Names</b>	AI450827, FREAC1, Foxf1, Freac-1, HFH-8, Hfh8, Foxf1a Forkhead box protein F1, Forkhead-related protein FKHL5, Forkhead-related transcription factor 1, FREAC-1, Hepatocyte nuclear factor 3 forkhead homolog 8, HFH-8, Foxf1, Fkhl5, Foxf1a, Freac1, Hfh8
<b>Format</b>	Liquid. Purified antibody supplied in 1x PBS buffer with 0.09% (w/v) sodium azide and 2% sucrose.
<b>Reconstitution &amp; Storage</b>	Add 50 ul of distilled water. Final anti-Foxf1a antibody concentration is 1 mg/ml in PBS buffer with 2% sucrose. For longer periods of storage, store at 20°C. Avoid repeat freeze-thaw cycles.
<b>Precautions</b>	Foxf1a antibody - middle region is for research use only and not for use in diagnostic or therapeutic procedures.

## Protein Information

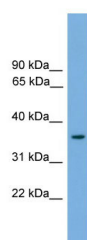
<b>Name</b>	Foxf1
<b>Synonyms</b>	Fkhl5, Foxf1a, Freac1, Hfh8
<b>Function</b>	Probable transcription activator for a number of lung- specific genes.
<b>Cellular Location</b>	Nucleus {ECO:0000255 PROSITE-ProRule:PRU00089}.
<b>Tissue Location</b>	Expressed primarily in lung in alveolar type II pneumocyte cells, and to a lesser extent in placenta, stomach, intestine and colon.

## Images

---



Sample Type: Mouse E 18.5 Gut Dilution: 1:1000



WB Suggested Anti-Foxf1a Antibody Titration: 0.2-1 µg/ml  
ELISA Titer: 1:312500  
Positive Control: Mouse Heart

Please note: All products are 'FOR RESEARCH USE ONLY. NOT FOR USE IN DIAGNOSTIC OR THERAPEUTIC PROCEDURES'.