

# Lhx8 antibody - N-terminal region

Rabbit Polyclonal Antibody

Catalog # AI11122

## Product Information

---

<b>Application</b>	WB
<b>Primary Accession</b>	<a href="#">O35652</a>
<b>Other Accession</b>	<a href="#">NM_010713</a> , <a href="#">NP_034843</a>
<b>Reactivity</b>	Human, Mouse, Rat, Rabbit, Dog, Bovine
<b>Predicted</b>	Human, Mouse, Rat, Rabbit, Pig
<b>Host</b>	Rabbit
<b>Clonality</b>	Polyclonal
<b>Calculated MW</b>	40710

## Additional Information

---

<b>Gene ID</b>	16875
<b>Alias Symbol</b>	L3, Lhx7
<b>Other Names</b>	LIM/homeobox protein Lhx8, LIM homeobox protein 8, L3, LIM/homeobox protein Lhx7, LIM homeobox protein 7, Lhx8, Lhx7
<b>Format</b>	Liquid. Purified antibody supplied in 1x PBS buffer with 0.09% (w/v) sodium azide and 2% sucrose.
<b>Reconstitution &amp; Storage</b>	Add 50 ul of distilled water. Final anti-Lhx8 antibody concentration is 1 mg/ml in PBS buffer with 2% sucrose. For longer periods of storage, store at 20°C. Avoid repeat freeze-thaw cycles.
<b>Precautions</b>	Lhx8 antibody - N-terminal region is for research use only and not for use in diagnostic or therapeutic procedures.

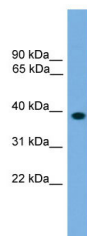
## Protein Information

---

<b>Name</b>	Lhx8
<b>Synonyms</b>	Lhx7
<b>Function</b>	Transcription factor involved in differentiation of certain neurons and mesenchymal cells.
<b>Cellular Location</b>	Nucleus.

## Images

---



WB Suggested Anti-Lhx8 Antibody Titration: 0.2-1  $\mu$ g/ml  
ELISA Titer: 1:62500  
Positive Control: NIH/3T3 cell lysate

Please note: All products are 'FOR RESEARCH USE ONLY. NOT FOR USE IN DIAGNOSTIC OR THERAPEUTIC PROCEDURES'.