

Lhx9 Antibody - C-terminal region

Rabbit Polyclonal Antibody

Catalog # AI11123

Product Information

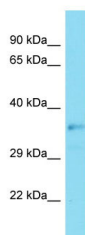
Application	WB
Primary Accession	Q9WUH2-4
Other Accession	NM_001025565 , NP_001020736
Reactivity	Human, Mouse, Rat, Zebrafish, Dog
Predicted	Human, Mouse, Rat, Zebrafish, Dog
Host	Rabbit
Clonality	Polyclonal
Calculated MW	37 KDa

Additional Information

Alias Symbol	3110009O07Rik, BB104635, LH2B
Format	Liquid. Purified antibody supplied in 1x PBS buffer with 0.09% (w/v) sodium azide and 2% sucrose.
Reconstitution & Storage	Add 50 ul of distilled water. Final anti-Lhx9 antibody concentration is 1 mg/ml in PBS buffer with 2% sucrose. For longer periods of storage, store at 20°C. Avoid repeat freeze-thaw cycles.
Precautions	Lhx9 Antibody - C-terminal region is for research use only and not for use in diagnostic or therapeutic procedures.

Protein Information

Images



Host: Rabbit
Target Name: Lhx9
Sample Tissue: Mouse Kidney lysates
Antibody Dilution: 1.0µg/ml