

# Stat5b antibody - C-terminal region

Rabbit Polyclonal Antibody  
Catalog # AI11137

## Product Information

---

<b>Application</b>	WB, IHC
<b>Primary Accession</b>	<a href="#">P42232</a>
<b>Other Accession</b>	<a href="#">NM_011489</a> , <a href="#">NP_035619</a>
<b>Reactivity</b>	Human, Mouse, Rat, Rabbit, Zebrafish, Dog, Horse, Bovine
<b>Predicted</b>	Human, Rabbit, Pig, Chicken, Dog, Horse
<b>Host</b>	Rabbit
<b>Clonality</b>	Polyclonal
<b>Calculated MW</b>	90 kDa

## Additional Information

---

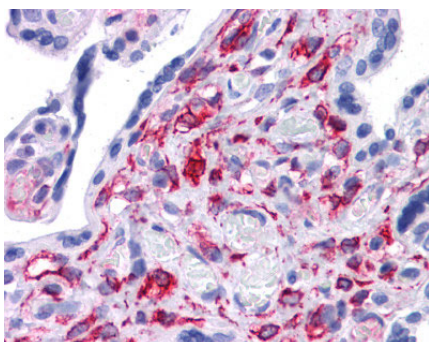
<b>Other Names</b>	Signal transducer and activator of transcription 5B, Stat5b
<b>Format</b>	Liquid. Purified antibody supplied in 1x PBS buffer with 0.09% (w/v) sodium azide and 2% sucrose.
<b>Reconstitution &amp; Storage</b>	Add 50 ul of distilled water. Final anti-Stat5b antibody concentration is 1 mg/ml in PBS buffer with 2% sucrose. For longer periods of storage, store at 20°C. Avoid repeat freeze-thaw cycles.
<b>Precautions</b>	Stat5b antibody - C-terminal region is for research use only and not for use in diagnostic or therapeutic procedures.

## Protein Information

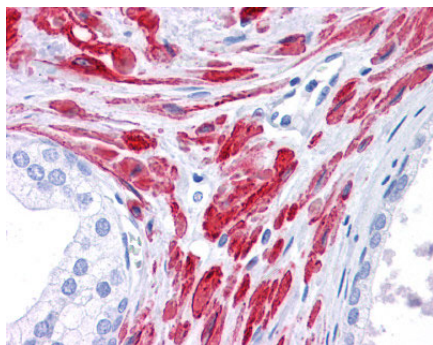
---

### Images

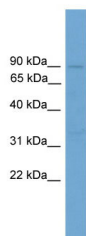
---



Human Prostate



Human Prostate



WB Suggested Anti-Stat5b Antibody Titration: 1  $\mu\text{g/ml}$   
Positive Control: Mouse Thymus

Please note: All products are 'FOR RESEARCH USE ONLY. NOT FOR USE IN DIAGNOSTIC OR THERAPEUTIC PROCEDURES'.