

# Tpbg Antibody - N-terminal region

Rabbit Polyclonal Antibody

Catalog # AI11141

## Product Information

---

<b>Application</b>	WB
<b>Primary Accession</b>	<a href="#">Q9Z0L0</a>
<b>Other Accession</b>	<a href="#">NM_011627</a> , <a href="#">NP_035757</a>
<b>Reactivity</b>	Mouse, Rat
<b>Predicted</b>	Mouse, Rat
<b>Host</b>	Rabbit
<b>Clonality</b>	Polyclonal
<b>Calculated MW</b>	46451

## Additional Information

---

<b>Gene ID</b>	21983
<b>Alias Symbol</b>	5T4, AW495680
<b>Other Names</b>	Trophoblast glycoprotein, 5T4 oncofetal trophoblast glycoprotein, 5T4 oncotrophoblast glycoprotein, Wnt-activated inhibitory factor 1, WAIF1, Tpbg, 5t4
<b>Format</b>	Liquid. Purified antibody supplied in 1x PBS buffer with 0.09% (w/v) sodium azide and 2% sucrose.
<b>Reconstitution &amp; Storage</b>	Add 50 ul of distilled water. Final anti-Tpbg antibody concentration is 1 mg/ml in PBS buffer with 2% sucrose. For longer periods of storage, store at 20°C. Avoid repeat freeze-thaw cycles.
<b>Precautions</b>	Tpbg Antibody - N-terminal region is for research use only and not for use in diagnostic or therapeutic procedures.

## Protein Information

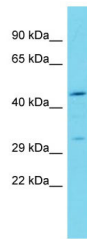
---

<b>Name</b>	Tpbg
<b>Synonyms</b>	5t4
<b>Function</b>	May function as an inhibitor of Wnt/beta-catenin signaling by indirectly interacting with LRP6 and blocking Wnt3a-dependent LRP6 internalization.
<b>Cellular Location</b>	Cell membrane; Single-pass type I membrane protein
<b>Tissue Location</b>	Highly expressed in embryo and placenta. In adult, expressed only in brain and ovary. Not detected in kidney small intestine, heart, spleen, testis, liver,

lung, thymus and stomach

## Images

---



Host: Rabbit  
Target Name: Tpbg  
Sample Tissue: Mouse Heart lysates  
Antibody Dilution: 1.0µg/ml

Please note: All products are 'FOR RESEARCH USE ONLY. NOT FOR USE IN DIAGNOSTIC OR THERAPEUTIC PROCEDURES'.