

Mta2 antibody - N-terminal region

Rabbit Polyclonal Antibody

Catalog # AI11143

Product Information

Application	WB
Primary Accession	Q9R190
Other Accession	NM_011842 , NP_035972
Reactivity	Human, Mouse, Rat, Rabbit, Zebrafish, Pig, Goat, Dog, Horse, Bovine, Yeast
Predicted	Human, Mouse, Rabbit, Zebrafish, Pig, Dog, Horse, Bovine
Host	Rabbit
Clonality	Polyclonal
Calculated MW	75030

Additional Information

Gene ID	23942
Alias Symbol Other Names	AW550797, Mata1l1, Mta1l1, mmta2 Metastasis-associated protein MTA2, Metastasis-associated 1-like 1, Mta2, Mta1l1
Format	Liquid. Purified antibody supplied in 1x PBS buffer with 0.09% (w/v) sodium azide and 2% sucrose.
Reconstitution & Storage	Add 100 ul of distilled water. Final anti-Mta2 antibody concentration is 1 mg/ml in PBS buffer with 2% sucrose. For longer periods of storage, store at 20°C. Avoid repeat freeze-thaw cycles.
Precautions	Mta2 antibody - N-terminal region is for research use only and not for use in diagnostic or therapeutic procedures.

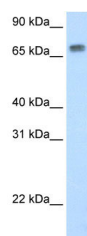
Protein Information

Name	Mta2
Synonyms	Mta1l1
Function	May function as a transcriptional coregulator (By similarity). Acts as a component of the histone deacetylase NuRD complex which participates in the remodeling of chromatin (By similarity).
Cellular Location	Nucleus {ECO:0000255 PROSITE-ProRule:PRU00512, ECO:0000255 PROSITE-ProRule:PRU00624, ECO:0000269 PubMed:11749719}

References

Blackshaw, S., PLoS Biol. 2 (9), E247 (2004) Reconstitution and Storage: For short term use, store at 2-8°C up to 1 week. For long term storage, store at -20°C in small aliquots to prevent freeze-thaw cycles.

Images



WB Suggested Anti-Mta2 Antibody Titration: 0.725 µg/ml
Positive Control: SP2/0 cell lysate

Please note: All products are 'FOR RESEARCH USE ONLY. NOT FOR USE IN DIAGNOSTIC OR THERAPEUTIC PROCEDURES'.