

Barx2 antibody - N-terminal region

Rabbit Polyclonal Antibody

Catalog # AI11148

Product Information

Application	WB
Primary Accession	O08686
Other Accession	NM_013800 , NP_038828
Reactivity	Human, Mouse, Rat, Rabbit, Zebrafish, Pig, Dog, Horse, Bovine
Predicted	Mouse, Rat, Rabbit, Chicken, Bovine
Host	Rabbit
Clonality	Polyclonal
Calculated MW	31534

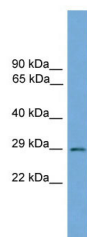
Additional Information

Gene ID	12023
Alias Symbol	2310006E12Rik, Barx2b
Other Names	Homeobox protein BarH-like 2, Barx2
Format	Liquid. Purified antibody supplied in 1x PBS buffer with 0.09% (w/v) sodium azide and 2% sucrose.
Reconstitution & Storage	Add 50 ul of distilled water. Final anti-Barx2 antibody concentration is 1 mg/ml in PBS buffer with 2% sucrose. For longer periods of storage, store at 20°C. Avoid repeat freeze-thaw cycles.
Precautions	Barx2 antibody - N-terminal region is for research use only and not for use in diagnostic or therapeutic procedures.

Protein Information

Name	Barx2
Function	Transcription factor. Binds optimally to the DNA consensus sequence 5'-YYTAATGRTTTY-3'. May control the expression of neural adhesion molecules such as L1 or Ng-CAM during embryonic development of both the central and peripheral nervous system. May be involved in controlling adhesive processes in keratinizing epithelia.
Cellular Location	Nucleus.
Tissue Location	Nervous system, particularly in the telencephalon, spinal cord, and dorsal root ganglia

Images



WB Suggested Anti-Barx2 Antibody Titration: 0.2-1 μ g/ml
Positive Control: Mouse Small Intestine

Please note: All products are 'FOR RESEARCH USE ONLY. NOT FOR USE IN DIAGNOSTIC OR THERAPEUTIC PROCEDURES'.