

Ptf1a Antibody - N-terminal region

Rabbit Polyclonal Antibody

Catalog # AI11160

Product Information

Application	WB
Primary Accession	Q9QX98
Other Accession	NM_018809 , NP_061279
Reactivity	Human, Mouse, Rat, Pig, Dog, Horse, Bovine
Predicted	Human, Mouse, Rat, Pig, Dog, Horse, Bovine
Host	Rabbit
Clonality	Polyclonal
Calculated MW	35185

Additional Information

Gene ID	19213
Alias Symbol	PTF1-p48, PTF1p48, bHLHa29
Other Names	Pancreas transcription factor 1 subunit alpha, Pancreas-specific transcription factor 1a, bHLH transcription factor p48, p48 DNA-binding subunit of transcription factor PTF1, PTF1-p48, Ptf1a, Ptf1p48
Format	Liquid. Purified antibody supplied in 1x PBS buffer with 0.09% (w/v) sodium azide and 2% sucrose.
Reconstitution & Storage	Add 50 ul of distilled water. Final anti-Ptf1a antibody concentration is 1 mg/ml in PBS buffer with 2% sucrose. For longer periods of storage, store at 20°C. Avoid repeat freeze-thaw cycles.
Precautions	Ptf1a Antibody - N-terminal region is for research use only and not for use in diagnostic or therapeutic procedures.

Protein Information

Name	Ptf1a
Synonyms	Ptf1p48
Function	Transcription factor implicated in the cell fate determination in various organs (PubMed: 11562365 , PubMed: 12185368 , PubMed: 15543146 , PubMed: 17075007 , PubMed: 9851981). Binds to the E-box consensus sequence 5'-CANNTG-3' (PubMed: 11562365 , PubMed: 12185368 , PubMed: 9851981). Plays a role in early and late pancreas development and differentiation (PubMed: 11562365 , PubMed: 21852532). Important for determining whether cells allocated to the pancreatic buds continue towards

pancreatic organogenesis or revert back to duodenal fates (PubMed:[11562365](#), PubMed:[12185368](#), PubMed:[9851981](#)). May be involved in the maintenance of exocrine pancreas-specific gene expression including ELA1 and amylase (PubMed:[11562365](#), PubMed:[12185368](#), PubMed:[9851981](#)). Required for the formation of pancreatic acinar and ductal cells (PubMed:[11562365](#)). Plays an important role in cerebellar development (PubMed:[15543146](#)). Directly regulated by FOXN4 and RORC during retinal development, FOXN4-PTF1A pathway plays a central role in directing the differentiation of retinal progenitors towards horizontal and amacrine fates (PubMed:[17075007](#)).

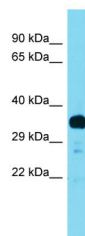
Cellular Location

Nucleus. Cytoplasm. Note=In the cytoplasm loses its ability to form the PTF1 complex

Tissue Location

Expressed in precursors of pancreatic islets, acini and ducts.

Images



Host: Rabbit
Target Name: Ptf1a
Sample Tissue: Mouse Testis lysates
Antibody Dilution: 1.0µg/ml

Please note: All products are 'FOR RESEARCH USE ONLY. NOT FOR USE IN DIAGNOSTIC OR THERAPEUTIC PROCEDURES'.