

# Plbd1 antibody - N-terminal region

Rabbit Polyclonal Antibody  
Catalog # AI11191

## Product Information

---

<b>Application</b>	WB
<b>Primary Accession</b>	<a href="#">Q8VCI0</a>
<b>Other Accession</b>	<a href="#">NM_025806</a> , <a href="#">NP_080082</a>
<b>Reactivity</b>	Human, Mouse, Rat, Rabbit, Zebrafish, Pig, Dog, Horse, Bovine
<b>Predicted</b>	Human, Rabbit, Bovine
<b>Host</b>	Rabbit
<b>Clonality</b>	Polyclonal
<b>Calculated MW</b>	63018

## Additional Information

---

<b>Gene ID</b>	66857
<b>Alias Symbol</b>	1100001H23Rik
<b>Other Names</b>	Phospholipase B-like 1, 3.1.1.-, LAMA-like protein 1, Lamina ancestor homolog 1, Phospholipase B domain-containing protein 1, Phospholipase B-like 1 chain A, Phospholipase B-like 1 chain B, Phospholipase B-like 1 chain C, Plbd1
<b>Format</b>	Liquid. Purified antibody supplied in 1x PBS buffer with 0.09% (w/v) sodium azide and 2% sucrose.
<b>Reconstitution &amp; Storage</b>	Add 50 ul of distilled water. Final anti-Plbd1 antibody concentration is 1 mg/ml in PBS buffer with 2% sucrose. For longer periods of storage, store at 20°C. Avoid repeat freeze-thaw cycles.
<b>Precautions</b>	Plbd1 antibody - N-terminal region is for research use only and not for use in diagnostic or therapeutic procedures.

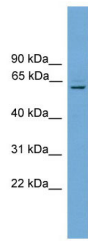
## Protein Information

---

<b>Name</b>	Plbd1
<b>Function</b>	Lysosomal processive monoaminopeptidase that preferentially cleaves hydrophobic amino acids, with strong preference for leucine residues. Plays a key role in the degradation of hydrophobic transmembrane domains within the lysosome.
<b>Cellular Location</b>	Lysosome {ECO:0000250 UniProtKB:Q9GL30}.

## Images

---



WB Suggested Anti-Plbd1 Antibody Titration: 0.2-1  $\mu\text{g/ml}$   
Positive Control: Mouse Heart

Please note: All products are 'FOR RESEARCH USE ONLY. NOT FOR USE IN DIAGNOSTIC OR THERAPEUTIC PROCEDURES'.