

# Ilf2 Antibody - N-terminal region

Rabbit Polyclonal Antibody

Catalog # AI11193

## Product Information

---

<b>Application</b>	WB
<b>Primary Accession</b>	<a href="#">Q9CXY6</a>
<b>Other Accession</b>	<a href="#">NM_026374</a> , <a href="#">NP_080650</a>
<b>Reactivity</b>	Human, Mouse, Rat, Rabbit, Zebrafish, Dog, Horse, Bovine
<b>Predicted</b>	Human, Mouse, Rat, Rabbit, Zebrafish, Pig, Bovine
<b>Host</b>	Rabbit
<b>Clonality</b>	Polyclonal
<b>Calculated MW</b>	43062

## Additional Information

---

<b>Gene ID</b>	67781
<b>Alias Symbol</b>	6230405A16Rik, TEG-267, Tex261, Tex267
<b>Other Names</b>	Interleukin enhancer-binding factor 2, Nuclear factor of activated T-cells 45 kDa, Ilf2, Nf45
<b>Format</b>	Liquid. Purified antibody supplied in 1x PBS buffer with 0.09% (w/v) sodium azide and 2% sucrose.
<b>Reconstitution &amp; Storage</b>	Add 50 ul of distilled water. Final anti-Ilf2 antibody concentration is 1 mg/ml in PBS buffer with 2% sucrose. For longer periods of storage, store at 20°C. Avoid repeat freeze-thaw cycles.
<b>Precautions</b>	Ilf2 Antibody - N-terminal region is for research use only and not for use in diagnostic or therapeutic procedures.

## Protein Information

---

<b>Name</b>	Ilf2
<b>Synonyms</b>	Nf45
<b>Function</b>	Chromatin-interacting protein that forms a stable heterodimer with interleukin enhancer-binding factor 3/ILF3 and plays a role in several biological processes including transcription, innate immunity or cell growth (PubMed: <a href="#">10574923</a> ). Essential for the efficient reshuttling of ILF3 (isoform 1 and isoform 2) into the nucleus. Together with ILF3, forms an RNA-binding complex that is required for mitotic progression and cytokinesis by regulating the expression of a cluster of mitotic genes. Mechanistically, competes with STAU1/STAU2- mediated mRNA decay. Also plays a role in the inhibition of

various viruses including Japanese encephalitis virus or enterovirus 71 (By similarity) (PubMed:[10574923](#)).

#### Cellular Location

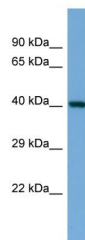
Nucleus, nucleolus {ECO:0000250|UniProtKB:Q12905}. Cytoplasm {ECO:0000250|UniProtKB:Q12905}. Nucleus {ECO:0000250|UniProtKB:Q12905} Note=Localized in cytoplasmic mRNP granules containing untranslated mRNAs. {ECO:0000250|UniProtKB:Q12905}

#### Tissue Location

Expressed in brain, kidney and ovary; highly expressed in testis, particularly within pachytene cells

## Images

---



Host: Rabbit

Target Name: Ilf2

Sample Tissue: Mouse Heart lysates

Antibody Dilution: 1.0µg/ml

Please note: All products are 'FOR RESEARCH USE ONLY. NOT FOR USE IN DIAGNOSTIC OR THERAPEUTIC PROCEDURES'.