

Hes7 Antibody - N-terminal region

Rabbit Polyclonal Antibody

Catalog # AI11213

Product Information

| | |
|--------------------------|---|
| Application | WB |
| Primary Accession | Q8BKT2 |
| Other Accession | NM_033041 , NP_149030 |
| Reactivity | Human, Mouse, Rat, Rabbit, Pig, Dog, Horse, Bovine |
| Predicted | Human, Mouse, Rat, Rabbit, Pig, Dog, Horse, Bovine |
| Host | Rabbit |
| Clonality | Polyclonal |
| Calculated MW | 24890 |

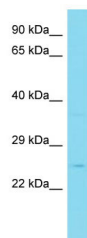
Additional Information

| | |
|-------------------------------------|---|
| Gene ID | 84653 |
| Alias Symbol | bHLHb37 |
| Other Names | Transcription factor HES-7, mHes7, Hairy and enhancer of split 7, bHLH factor Hes7, Hes7 |
| Format | Liquid. Purified antibody supplied in 1x PBS buffer with 0.09% (w/v) sodium azide and 2% sucrose. |
| Reconstitution & Storage | Add 50 ul of distilled water. Final anti-Hes7 antibody concentration is 1 mg/ml in PBS buffer with 2% sucrose. For longer periods of storage, store at 20°C. Avoid repeat freeze-thaw cycles. |
| Precautions | Hes7 Antibody - N-terminal region is for research use only and not for use in diagnostic or therapeutic procedures. |

Protein Information

| | |
|--------------------------|--|
| Name | Hes7 |
| Function | Transcriptional repressor. Represses transcription from both N box- and E box-containing promoters. May with HES1, cooperatively regulate somite formation in the presomitic mesoderm (PSM). May function as a segmentation clock, which is essential for coordinated somite segmentation. |
| Cellular Location | Nucleus. |

Images



Host: Rabbit
Target Name: Hes7
Sample Tissue: Mouse Stomach lysates
Antibody Dilution: 1.0µg/ml

Please note: All products are 'FOR RESEARCH USE ONLY. NOT FOR USE IN DIAGNOSTIC OR THERAPEUTIC PROCEDURES'.