

Rbm9 antibody - C-terminal region

Rabbit Polyclonal Antibody

Catalog # AI11215

Product Information

Application	WB
Primary Accession	Q8BP71
Other Accession	NM_053104 , NP_444334
Reactivity	Human, Mouse, Rat, Rabbit, Zebrafish, Pig, Dog, Horse, Bovine
Predicted	Human, Rat
Host	Rabbit
Clonality	Polyclonal
Calculated MW	47330

Additional Information

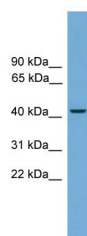
Gene ID	93686
Alias Symbol Other Names	2810460A15Rik, AA407676, AI118529, Fbm2, Fxh, Hrnbp2, Rbm9 RNA binding protein fox-1 homolog 2, Fox-1 homolog B, Fox-1 homolog Fxh, Hexaribonucleotide-binding protein 2, RNA-binding motif protein 9, RNA-binding protein 9, Rbfox2, Fox2, Fxh, Hrnbp2, Rbm9
Format	Liquid. Purified antibody supplied in 1x PBS buffer with 0.09% (w/v) sodium azide and 2% sucrose.
Reconstitution & Storage	Add 50 ul of distilled water. Final anti-Rbm9 antibody concentration is 1 mg/ml in PBS buffer with 2% sucrose. For longer periods of storage, store at 20°C. Avoid repeat freeze-thaw cycles.
Precautions	Rbm9 antibody - C-terminal region is for research use only and not for use in diagnostic or therapeutic procedures.

Protein Information

Name	Rbfox2
Synonyms	Fox2, Fxh, Hrnbp2, Rbm9
Function	RNA-binding protein that regulates alternative splicing events by binding to 5'-UGCAUGU-3' elements. Prevents binding of U2AF2 to the 3'-splice site. Regulates alternative splicing of tissue- specific exons and of differentially spliced exons during erythropoiesis. Seems to act as a coregulatory factor of ER-alpha (By similarity). Together with RNA binding proteins RBPMS and MBNL1/2, activates vascular smooth muscle cells alternative splicing events (By similarity).

Cellular Location	Nucleus. Cytoplasm.
Tissue Location	Detected in brain neurons (at protein level). Detected in heart, brain, embryo, lung, liver, kidney and ovary

Images



WB Suggested Anti-Rbm9 Antibody Titration: 0.2-1 μ g/ml
Positive Control: Mouse Heart

Please note: All products are 'FOR RESEARCH USE ONLY. NOT FOR USE IN DIAGNOSTIC OR THERAPEUTIC PROCEDURES'.