

# Onecut3 antibody - C-terminal region

Rabbit Polyclonal Antibody

Catalog # AI11231

## Product Information

<b>Application</b>	WB
<b>Primary Accession</b>	<a href="#">Q8K557</a>
<b>Other Accession</b>	<a href="#">NM_139226</a> , <a href="#">NP_631972</a>
<b>Reactivity</b>	Human, Mouse, Rat, Rabbit, Zebrafish, Pig, Dog, Bovine
<b>Predicted</b>	Zebrafish, Pig, Dog, Bovine
<b>Host</b>	Rabbit
<b>Clonality</b>	Polyclonal
<b>Calculated MW</b>	49571

## Additional Information

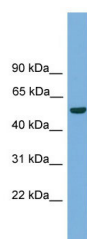
<b>Gene ID</b>	246086
<b>Alias Symbol</b>	OC-3, Oc3
<b>Other Names</b>	One cut domain family member 3, One cut homeobox 3, Transcription factor ONECUT-3, OC-3, Onecut3
<b>Format</b>	Liquid. Purified antibody supplied in 1x PBS buffer with 0.09% (w/v) sodium azide and 2% sucrose.
<b>Reconstitution &amp; Storage</b>	Add 50 ul of distilled water. Final anti-Onecut3 antibody concentration is 1 mg/ml in PBS buffer with 2% sucrose. For longer periods of storage, store at 20°C. Avoid repeat freeze-thaw cycles.
<b>Precautions</b>	Onecut3 antibody - C-terminal region is for research use only and not for use in diagnostic or therapeutic procedures.

## Protein Information

<b>Name</b>	Onecut3
<b>Function</b>	Transcriptional activator. Binds the consensus DNA sequence 5'-DHWATTGAYTWW-3' on a variety of gene promoters such as those of HNF3B and TTR.
<b>Cellular Location</b>	Nucleus {ECO:0000255   PROSITE-ProRule:PRU00108, ECO:0000255   PROSITE-ProRule:PRU00374, ECO:0000269   PubMed:15381696}
<b>Tissue Location</b>	Specifically expressed in brain, stomach and gut. Within the gut, expressed only in duodenum and jejunum

## Images

---



WB Suggested Anti-Onecut3 Antibody Titration: 0.2-1  
 $\mu\text{g/ml}$   
Positive Control: Mouse Liver

Please note: All products are 'FOR RESEARCH USE ONLY. NOT FOR USE IN DIAGNOSTIC OR THERAPEUTIC PROCEDURES'.