

# Helt Antibody - C-terminal region

Rabbit Polyclonal Antibody

Catalog # AI11247

## Product Information

<b>Application</b>	WB
<b>Primary Accession</b>	<a href="#">Q7TS99</a>
<b>Other Accession</b>	<a href="#">NM_173789</a> , <a href="#">NP_776150</a>
<b>Reactivity</b>	Human, Mouse, Rat, Rabbit, Horse, Bovine
<b>Predicted</b>	Human, Mouse, Rat, Rabbit, Pig, Horse, Bovine
<b>Host</b>	Rabbit
<b>Clonality</b>	Polyclonal
<b>Calculated MW</b>	26973

## Additional Information

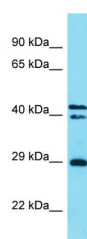
<b>Gene ID</b>	234219
<b>Alias Symbol</b>	A830086M02, Hesl, Mgn, megane
<b>Other Names</b>	Hairy and enhancer of split-related protein HELT, HES/HEY-like transcription factor, Protein Hes-like, Protein megane, Helt, Hesl, Mgn
<b>Format</b>	Liquid. Purified antibody supplied in 1x PBS buffer with 0.09% (w/v) sodium azide and 2% sucrose.
<b>Reconstitution &amp; Storage</b>	Add 50 ul of distilled water. Final anti-Helt antibody concentration is 1 mg/ml in PBS buffer with 2% sucrose. For longer periods of storage, store at 20°C. Avoid repeat freeze-thaw cycles.
<b>Precautions</b>	Helt Antibody - C-terminal region is for research use only and not for use in diagnostic or therapeutic procedures.

## Protein Information

<b>Name</b>	Helt
<b>Synonyms</b>	Hesl, Mgn
<b>Function</b>	Transcriptional repressor which binds preferentially to the canonical E box sequence 5'-CACGCG-3'. Required for the development of GABAergic neurons.
<b>Cellular Location</b>	Nucleus {ECO:0000255   PROSITE-ProRule:PRU00380, ECO:0000255   PROSITE-ProRule:PRU00981, ECO:0000269   PubMed:14764602, ECO:0000269   PubMed:16644143}
<b>Tissue Location</b>	Expressed in heart and testis.

## Images

---



Host: Rabbit  
Target Name: Helt  
Sample Tissue: Mouse Stomach lysates  
Antibody Dilution: 1.0µg/ml

Please note: All products are 'FOR RESEARCH USE ONLY. NOT FOR USE IN DIAGNOSTIC OR THERAPEUTIC PROCEDURES'.