

# Bola2 antibody - N-terminal region

Rabbit Polyclonal Antibody

Catalog # AI11248

## Product Information

---

<b>Application</b>	WB
<b>Primary Accession</b>	<a href="#">Q8BGS2</a>
<b>Other Accession</b>	<a href="#">NM_175103</a> , <a href="#">NP_780312</a>
<b>Reactivity</b>	Human, Mouse, Rat, Rabbit, Goat, Bovine
<b>Predicted</b>	Human, Mouse, Rat, Goat, Bovine
<b>Host</b>	Rabbit
<b>Clonality</b>	Polyclonal
<b>Calculated MW</b>	10215

## Additional Information

---

<b>Gene ID</b>	66162
<b>Alias Symbol</b>	1110025L05Rik, Bola-2
<b>Other Names</b>	BolA-like protein 2, Bola2
<b>Format</b>	Liquid. Purified antibody supplied in 1x PBS buffer with 0.09% (w/v) sodium azide and 2% sucrose.
<b>Reconstitution &amp; Storage</b>	Add 50 ul of distilled water. Final anti-Bola2 antibody concentration is 1 mg/ml in PBS buffer with 2% sucrose. For longer periods of storage, store at 20°C. Avoid repeat freeze-thaw cycles.
<b>Precautions</b>	Bola2 antibody - N-terminal region is for research use only and not for use in diagnostic or therapeutic procedures.

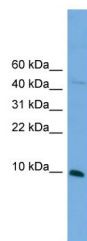
## Protein Information

---

<b>Name</b>	Bola2
<b>Function</b>	Acts as a cytosolic iron-sulfur (Fe-S) cluster assembly factor that facilitates [2Fe-2S] cluster insertion into a subset of cytosolic proteins. Acts together with the monothiol glutaredoxin GLRX3.
<b>Cellular Location</b>	Cytoplasm {ECO:0000250 UniProtKB:Q9H3K6}. Nucleus {ECO:0000250 UniProtKB:Q9H3K6}

## Images

---



WB Suggested Anti-Bola2 Antibody Titration: 0.2-1  $\mu$ g/ml  
Positive Control: SP2/0 cell lysate

Please note: All products are 'FOR RESEARCH USE ONLY. NOT FOR USE IN DIAGNOSTIC OR THERAPEUTIC PROCEDURES'.