

Klf11 antibody - middle region

Rabbit Polyclonal Antibody

Catalog # AI11259

Product Information

Application	WB
Primary Accession	Q8K1S5
Other Accession	NM_178357 , NP_848134
Reactivity	Mouse, Rat
Predicted	Mouse, Rat
Host	Rabbit
Clonality	Polyclonal
Calculated MW	54054

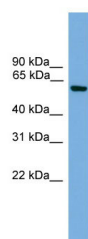
Additional Information

Gene ID	194655
Alias Symbol Other Names	9830142A17, D12Ert427e, Tieg2, Tieg2b, Tieg3 Krueppel-like factor 11, TGFB-inducible early growth response protein 2b, Transforming growth factor-beta-inducible early growth response protein 3, TGFB-inducible early growth response protein 3, TIEG-3, Klf11 {ECO:0000312 MGI:MGI:2653368}
Format	Liquid. Purified antibody supplied in 1x PBS buffer with 0.09% (w/v) sodium azide and 2% sucrose.
Reconstitution & Storage	Add 50 ul of distilled water. Final anti-Klf11 antibody concentration is 1 mg/ml in PBS buffer with 2% sucrose. For longer periods of storage, store at 20°C. Avoid repeat freeze-thaw cycles.
Precautions	Klf11 antibody - middle region is for research use only and not for use in diagnostic or therapeutic procedures.

Protein Information

Name	Klf11 {ECO:0000312 MGI:MGI:2653368}
Function	Transcription factor. Activates the epsilon- and gamma-globin gene promoters and, to a much lower degree, the beta-globin gene and represses promoters containing SP1-like binding sites inhibiting cell growth (By similarity). Represses transcription of SMAD7 which enhances TGF-beta signaling. Induces apoptosis.
Cellular Location	Nucleus {ECO:0000250 UniProtKB:O14901}.

Images



WB Suggested Anti-Klf11 Antibody Titration: 0.2-1 $\mu\text{g/ml}$
Positive Control: Mouse Brain

Please note: All products are 'FOR RESEARCH USE ONLY. NOT FOR USE IN DIAGNOSTIC OR THERAPEUTIC PROCEDURES'.