

KCTD6 antibody - N-terminal region

Rabbit Polyclonal Antibody

Catalog # AI11301

Product Information

Application	WB
Primary Accession	Q8TCA6
Other Accession	NM_153331 , NP_699162
Reactivity	Human, Mouse, Rat, Rabbit, Zebrafish, Pig, Dog, Horse, Bovine
Predicted	Human, Mouse, Rat, Zebrafish, Chicken, Bovine
Host	Rabbit
Clonality	Polyclonal
Calculated MW	26 KDa

Additional Information

Alias Symbol	KCASH3
Format	Liquid. Purified antibody supplied in 1x PBS buffer with 0.09% (w/v) sodium azide and 2% sucrose.
Reconstitution & Storage	Add 100 ul of distilled water. Final anti-KCTD6 antibody concentration is 1 mg/ml in PBS buffer with 2% sucrose. For longer periods of storage, store at 20°C. Avoid repeat freeze-thaw cycles.
Precautions	KCTD6 antibody - N-terminal region is for research use only and not for use in diagnostic or therapeutic procedures.

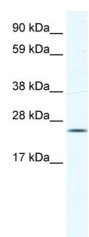
Protein Information

References

Otsuki,T., et al., (2005) DNA Res. 12 (2), 117-126
Reconstitution and Storage:For short term use, store at 2-8C up to 1 week. For long term storage, store at -20C in small aliquots to prevent freeze-thaw cycles.

Images

WB Suggested Anti-KCTD6 Antibody Titration: 0.625µg/ml
ELISA Titer: 1:312500
Positive Control: Human Lung



Please note: All products are 'FOR RESEARCH USE ONLY. NOT FOR USE IN DIAGNOSTIC OR THERAPEUTIC PROCEDURES'.