

# L3MBTL antibody - N-terminal region

Rabbit Polyclonal Antibody

Catalog # AI11307

## Product Information

<b>Application</b>	WB
<b>Primary Accession</b>	<a href="#">Q9Y468</a>
<b>Other Accession</b>	<a href="#">NM_015478</a> , <a href="#">NP_056293</a>
<b>Reactivity</b>	Human, Dog
<b>Predicted</b>	Human
<b>Host</b>	Rabbit
<b>Clonality</b>	Polyclonal
<b>Calculated MW</b>	92297

## Additional Information

<b>Gene ID</b>	26013
<b>Alias Symbol</b>	DKFZp586P1522, FLJ41181, H-L(3)MBT, KIAA0681, L3MBTL1, dj138B7.3, L3MBTL
<b>Other Names</b>	Lethal(3)malignant brain tumor-like protein 1, H-l(3)mbt, H-l(3)mbt protein, L(3)mbt-like, L(3)mbt protein homolog, L3MBTL1, L3MBTL1, KIAA0681, L3MBT, L3MBTL
<b>Format</b>	Liquid. Purified antibody supplied in 1x PBS buffer with 0.09% (w/v) sodium azide and 2% sucrose.
<b>Reconstitution &amp; Storage</b>	Add 50 ul of distilled water. Final anti-L3MBTL antibody concentration is 1 mg/ml in PBS buffer with 2% sucrose. For longer periods of storage, store at 20°C. Avoid repeat freeze-thaw cycles.
<b>Precautions</b>	L3MBTL antibody - N-terminal region is for research use only and not for use in diagnostic or therapeutic procedures.

## Protein Information

<b>Name</b>	L3MBTL1
<b>Synonyms</b>	KIAA0681, L3MBT, L3MBTL
<b>Function</b>	Polycomb group (PcG) protein that specifically recognizes and binds mono- and dimethyllysine residues on target proteins, thereby acting as a 'reader' of a network of post-translational modifications. PcG proteins maintain the transcriptionally repressive state of genes: acts as a chromatin compaction factor by recognizing and binding mono- and dimethylated histone H1b/H1-4 at 'Lys-26' (H1bK26me1 and H1bK26me2) and histone H4 at 'Lys-20'

(H4K20me1 and H4K20me2), leading to condense chromatin and repress transcription. Recognizes and binds p53/TP53 monomethylated at 'Lys-382', leading to repress p53/TP53- target genes. Also recognizes and binds RB1/RB monomethylated at 'Lys- 860'. Participates in the ETV6-mediated repression. Probably plays a role in cell proliferation. Overexpression induces multinucleated cells, suggesting that it is required to accomplish normal mitosis.

#### Cellular Location

Nucleus. Note=Excluded from the nucleolus. Does not colocalize with the PcG protein BMI1, suggesting that these two proteins do not belong to the same complex

#### Tissue Location

Widely expressed. Expression is reduced in colorectal cancer cell line SW480 and promyelocytic leukemia cell line HL-60.

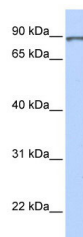
## References

---

Min,J., (2007) Nat. Struct. Mol. Biol. 14 (12), 1229-1230 Reconstitution and Storage:For short term use, store at 2-8C up to 1 week. For long term storage, store at -20C in small aliquots to prevent freeze-thaw cycles.

## Images

---



WB Suggested Anti-L3MBTL Antibody Titration: 0.2-1  
µg/ml  
ELISA Titer: 1:1562500  
Positive Control: Human brain

Please note: All products are 'FOR RESEARCH USE ONLY. NOT FOR USE IN DIAGNOSTIC OR THERAPEUTIC PROCEDURES'.