

LASS5 antibody - N-terminal region

Rabbit Polyclonal Antibody

Catalog # AI11312

Product Information

Application	WB
Primary Accession	Q8N5B7
Other Accession	NM_147190 , NP_671723
Reactivity	Human, Rat, Rabbit, Dog, Horse, Bovine
Predicted	Horse
Host	Rabbit
Clonality	Polyclonal
Calculated MW	45752

Additional Information

Gene ID	91012
Alias Symbol	CerS5, FLJ25304, MGC45411, Trh4, LASS5
Other Names	Ceramide synthase 5, CerS5, 2.3.1.24, LAG1 longevity assurance homolog 5, CERS5, LASS5
Format	Liquid. Purified antibody supplied in 1x PBS buffer with 0.09% (w/v) sodium azide and 2% sucrose.
Reconstitution & Storage	Add 50 ul of distilled water. Final anti-LASS5 antibody concentration is 1 mg/ml in PBS buffer with 2% sucrose. For longer periods of storage, store at 20°C. Avoid repeat freeze-thaw cycles.
Precautions	LASS5 antibody - N-terminal region is for research use only and not for use in diagnostic or therapeutic procedures.

Protein Information

Name	CERS5 (HGNC:23749)
Function	Ceramide synthase that catalyzes the transfer of the acyl chain from acyl-CoA to a sphingoid base, with high selectivity toward palmitoyl-CoA (hexadecanoyl-CoA; C16:0-CoA) (PubMed: 16951403 , PubMed: 18541923 , PubMed: 22144673 , PubMed: 22661289 , PubMed: 23530041 , PubMed: 26887952 , PubMed: 29632068 , PubMed: 31916624). Can use other acyl donors, but with less efficiency (By similarity). N-acylates sphinganine and sphingosine bases to form dihydroceramides and ceramides in de novo synthesis and salvage pathways, respectively (PubMed: 31916624). Plays a role in de novo ceramide synthesis and surfactant homeostasis in pulmonary epithelia (By similarity).

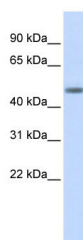
Cellular Location

Endoplasmic reticulum membrane {ECO:0000250|UniProtKB:Q9D6K9};
Multi-pass membrane protein

References

Kitatani,K., (2006) J. Biol. Chem. 281 (48), 36793-36802 Reconstitution and Storage:For short term use, store at 2-8C up to 1 week. For long term storage, store at -20C in small aliquots to prevent freeze-thaw cycles.

Images



WB Suggested Anti-LASS5 Antibody Titration: 0.2-1 µg/ml
ELISA Titer: 1:62500
Positive Control: Human Pancreas

Please note: All products are 'FOR RESEARCH USE ONLY. NOT FOR USE IN DIAGNOSTIC OR THERAPEUTIC PROCEDURES'.