

Aste1 antibody - middle region

Rabbit Polyclonal Antibody

Catalog # AI11332

Product Information

Application	WB
Primary Accession	Q8BIR2
Other Accession	NM_025651 , NP_079927
Reactivity	Human, Mouse, Rat, Pig, Dog, Horse
Predicted	Mouse, Dog
Host	Rabbit
Clonality	Polyclonal
Calculated MW	76370

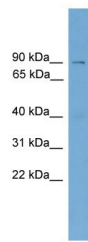
Additional Information

Gene ID	66595
Alias Symbol	1100001A21Rik, AV006403, MGC107393
Other Names	Protein asteroid homolog 1, Aste1
Format	Liquid. Purified antibody supplied in 1x PBS buffer with 0.09% (w/v) sodium azide and 2% sucrose.
Reconstitution & Storage	Add 50 ul of distilled water. Final anti-Aste1 antibody concentration is 1 mg/ml in PBS buffer with 2% sucrose. For longer periods of storage, store at 20°C. Avoid repeat freeze-thaw cycles.
Precautions	Aste1 antibody - middle region is for research use only and not for use in diagnostic or therapeutic procedures.

Protein Information

Name	Aste1
Function	Structure-specific DNA endonuclease that specifically cleaves single-stranded DNA and 3' overhang DNA (By similarity). Contributes to the control of DNA double-strand break repair choice by antagonizing BRCA1-dependent homologous recombination (HR) and promoting non-homologous end-joining (NHEJ) (PubMed: 34354233). Recruited to the single-stranded DNA ends by SHLD2 and cleaves the 3' exposed DNA ends, therefore inhibiting DNA end resection (necessary for HR) and promoting DNA end protection (necessary for NHEJ) (By similarity).

Images



WB Suggested Anti-Aste1 Antibody Titration: 0.2-1 $\mu\text{g/ml}$
Positive Control: Mouse Muscle

Please note: All products are 'FOR RESEARCH USE ONLY. NOT FOR USE IN DIAGNOSTIC OR THERAPEUTIC PROCEDURES'.