

Esrp2 Antibody - N-terminal region

Rabbit Polyclonal Antibody

Catalog # AI11336

Product Information

Application	WB
Primary Accession	Q8K0G8
Other Accession	NM_176838 , NP_789808
Reactivity	Human, Mouse, Rat, Rabbit, Dog, Bovine
Predicted	Mouse, Rat, Pig, Dog, Bovine
Host	Rabbit
Clonality	Polyclonal
Calculated MW	77361

Additional Information

Gene ID	77411
Alias Symbol	9530027K23Rik, Rbm35b
Other Names	Epithelial splicing regulatory protein 2, RNA-binding motif protein 35B, RNA-binding protein 35B, Esrp2, Rbm35b
Format	Liquid. Purified antibody supplied in 1x PBS buffer with 0.09% (w/v) sodium azide and 2% sucrose.
Reconstitution & Storage	Add 50 ul of distilled water. Final anti-Esrp2 antibody concentration is 1 mg/ml in PBS buffer with 2% sucrose. For longer periods of storage, store at 20°C. Avoid repeat freeze-thaw cycles.
Precautions	Esrp2 Antibody - N-terminal region is for research use only and not for use in diagnostic or therapeutic procedures.

Protein Information

Name	Esrp2
Synonyms	Rbm35b
Function	mRNA splicing factor that regulates the formation of epithelial cell-specific isoforms. Specifically regulates the expression of FGFR2-IIIb, an epithelial cell-specific isoform of FGFR2. Also regulates the splicing of CD44, CTNND1, ENAH, 3 transcripts that undergo changes in splicing during the epithelial-to-mesenchymal transition (EMT). Acts by directly binding specific sequences in mRNAs. Binds the GU-rich sequence motifs in the ISE/ISS-3, a cis-element regulatory region present in the mRNA of FGFR2 (By similarity).

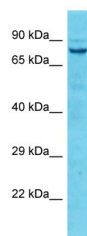
Cellular Location

Nucleus.

Tissue Location

Epithelial cell-specific.

Images



Host: Rabbit

Target Name: Esrp2

Sample Tissue: Mouse Heart lysates

Antibody Dilution: 1.0µg/ml

Please note: All products are 'FOR RESEARCH USE ONLY. NOT FOR USE IN DIAGNOSTIC OR THERAPEUTIC PROCEDURES'.