

# BTF3 antibody - middle region

Rabbit Polyclonal Antibody

Catalog # AI11348

## Product Information

---

<b>Application</b>	WB
<b>Primary Accession</b>	<a href="#">P20290</a>
<b>Other Accession</b>	<a href="#">NM_001037637</a> , <a href="#">NP_001032726</a>
<b>Reactivity</b>	Human, Mouse, Rat, Rabbit, Zebrafish, Pig, Dog, Horse, Bovine, Yeast
<b>Predicted</b>	Human, Mouse, Rat, Rabbit, Zebrafish, Pig, Chicken, Dog, Horse, Bovine
<b>Host</b>	Rabbit
<b>Clonality</b>	Polyclonal
<b>Calculated MW</b>	22168

## Additional Information

---

<b>Gene ID</b>	689
<b>Alias Symbol</b>	NACB, BTF3a, BTF3b, BETA-NAC
<b>Other Names</b>	Transcription factor BTF3, Nascent polypeptide-associated complex subunit beta, NAC-beta, RNA polymerase B transcription factor 3, BTF3, NACB
<b>Format</b>	Liquid. Purified antibody supplied in 1x PBS buffer with 0.09% (w/v) sodium azide and 2% sucrose.
<b>Reconstitution &amp; Storage</b>	Add 100 ul of distilled water. Final anti-BTF3 antibody concentration is 1 mg/ml in PBS buffer with 2% sucrose. For longer periods of storage, store at 20°C. Avoid repeat freeze-thaw cycles.
<b>Precautions</b>	BTF3 antibody - middle region is for research use only and not for use in diagnostic or therapeutic procedures.

## Protein Information

---

<b>Name</b>	BTF3
<b>Synonyms</b>	NACB
<b>Function</b>	When associated with NACA, prevents inappropriate targeting of non-secretory polypeptides to the endoplasmic reticulum (ER). Binds to nascent polypeptide chains as they emerge from the ribosome and blocks their interaction with the signal recognition particle (SRP), which normally targets nascent secretory peptides to the ER. BTF3 is also a general transcription factor that can form a stable complex with RNA polymerase II. Required for the initiation of transcription.

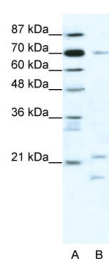
## Cellular Location

Cytoplasm. Nucleus. Note=The heterodimer with NACA is cytoplasmic

## References

Oyake,T., et al., (2005) Gene 345 (2), 271-277  
Reconstitution and Storage:For short term use, store at 2-8C up to 1 week. For long term storage, store at -20C in small aliquots to prevent freeze-thaw cycles.  
Publications:Thakur, D. et al. Human beta casein fragment (54-59) modulates M. bovis BCG survival and basic transcription factor 3 (BTF3) expression in THP-1 cell line. PLoS One 7, e45905 (2012).  
WB, IP, Dog, Pig, H, Rabbit, Rat, Guinea pig, Human, Zebrafish, Bovine, Mouse, Yeast23029305

## Images



WB Suggested Anti-BTF3 Antibody Titration: 1.25µg/ml  
ELISA Titer: 1:312500  
Positive Control: Jurkat cell lysate  
BTF3 is strongly supported by BioGPS gene expression data to be expressed in Human Jurkat cells

Please note: All products are 'FOR RESEARCH USE ONLY. NOT FOR USE IN DIAGNOSTIC OR THERAPEUTIC PROCEDURES'.