

Ldb2 antibody - N-terminal region

Rabbit Polyclonal Antibody

Catalog # AI11350

Product Information

Application	WB
Primary Accession	O55203
Other Accession	NM_010698 , NP_034828
Reactivity	Human, Mouse, Rat, Rabbit, Zebrafish, Dog, Horse, Bovine
Predicted	Human, Mouse, Rabbit, Chicken, Horse, Bovine
Host	Rabbit
Clonality	Polyclonal
Calculated MW	42691

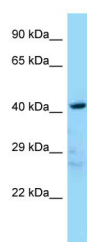
Additional Information

Gene ID	16826
Alias Symbol	AI035351, AW146358, CLIM1, CLP-36, Ldb3
Other Names	LIM domain-binding protein 2, LDB-2, Carboxyl-terminal LIM domain-binding protein 1, CLIM-1, LIM domain-binding factor CLIM1, Ldb2, Clim1
Format	Liquid. Purified antibody supplied in 1x PBS buffer with 0.09% (w/v) sodium azide and 2% sucrose.
Reconstitution & Storage	Add 50 ul of distilled water. Final anti-Ldb2 antibody concentration is 1 mg/ml in PBS buffer with 2% sucrose. For longer periods of storage, store at 20°C. Avoid repeat freeze-thaw cycles.
Precautions	Ldb2 antibody - N-terminal region is for research use only and not for use in diagnostic or therapeutic procedures.

Protein Information

Name	Ldb2
Synonyms	Clim1
Function	Transcription cofactor (PubMed: 9192866). Binds to the LIM domain of a wide variety of LIM domain-containing transcription factors (PubMed: 9192866).
Cellular Location	Nucleus. Note=Colocalizes with SLK at leading edges (PubMed:19675209).
Tissue Location	Expressed in multiple tissues including heart, brain, liver, kidney, testis, lung and muscle, with expression highest in the brain, trigeminal ganglia, and lung

Images



WB Suggested Anti-Ldb2 Antibody Titration: 1.0 µg/ml
Positive Control: Mouse Heart

Please note: All products are 'FOR RESEARCH USE ONLY. NOT FOR USE IN DIAGNOSTIC OR THERAPEUTIC PROCEDURES'.