

Eno1 antibody - N-terminal region

Rabbit Polyclonal Antibody

Catalog # AI11351

Product Information

| | |
|--------------------------|--|
| Application | WB |
| Primary Accession | P04764 |
| Other Accession | NM_001109908 , AAH90069 |
| Reactivity | Human, Mouse, Rat, Rabbit, Zebrafish, Dog, Horse, Bovine |
| Predicted | Mouse, Rat, Rabbit, Zebrafish, Chicken |
| Host | Rabbit |
| Clonality | Polyclonal |
| Calculated MW | 47128 |

Additional Information

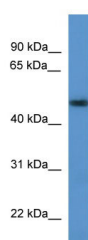
| | |
|-------------------------------------|---|
| Gene ID | 24333 |
| Alias Symbol | Eno1 |
| Other Names | Alpha-enolase, 4.2.1.11, 2-phospho-D-glycerate hydro-lyase, Enolase 1, Non-neural enolase, NNE, Eno1, Eno-1 |
| Format | Liquid. Purified antibody supplied in 1x PBS buffer with 0.09% (w/v) sodium azide and 2% sucrose. |
| Reconstitution & Storage | Add 50 ul of distilled water. Final anti-Eno1 antibody concentration is 1 mg/ml in PBS buffer with 2% sucrose. For longer periods of storage, store at 20°C. Avoid repeat freeze-thaw cycles. |
| Precautions | Eno1 antibody - N-terminal region is for research use only and not for use in diagnostic or therapeutic procedures. |

Protein Information

| | |
|-----------------|--|
| Name | Eno1 |
| Synonyms | Eno-1 |
| Function | Glycolytic enzyme that catalyzes the conversion of 2- phosphoglycerate to phosphoenolpyruvate. In addition to glycolysis, involved in various processes such as growth control, hypoxia tolerance and allergic responses. May also function in the intravascular and pericellular fibrinolytic system due to its ability to serve as a receptor and activator of plasminogen on the cell surface of several cell-types such as leukocytes and neurons. Stimulates immunoglobulin production. |

| | |
|--------------------------|--|
| Cellular Location | Cytoplasm. Cell membrane. Note=Can translocate to the plasma membrane in either the homodimeric (alpha/alpha) or heterodimeric (alpha/gamma) form |
| Tissue Location | Expressed in flagella of epididymal sperm. The alpha/alpha homodimer is expressed in embryo and in most adult tissues The alpha/beta heterodimer and the beta/beta homodimer are found in striated muscle, and the alpha/gamma heterodimer and the gamma/gamma homodimer in neurons. |

Images



WB Suggested Anti-Eno1 Antibody Titration: 0.2-1 µg/ml
 ELISA Titer: 1:1562500
 Positive Control: Rat Lung

Please note: All products are 'FOR RESEARCH USE ONLY. NOT FOR USE IN DIAGNOSTIC OR THERAPEUTIC PROCEDURES'.