

Hpcal1 antibody - C-terminal region

Rabbit Polyclonal Antibody

Catalog # AI11362

Product Information

Application	WB
Primary Accession	P62748
Other Accession	NM_016677 , NP_057886
Reactivity	Human, Mouse, Rat, Rabbit, Zebrafish, Dog, Horse, Bovine, Sheep
Predicted	Human, Dog
Host	Rabbit
Clonality	Polyclonal
Calculated MW	22338

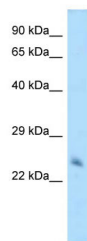
Additional Information

Gene ID	53602
Alias Symbol	NVP-3, Nvp3, VILIP3, VnsI3, VsnI3
Other Names	Hippocalcin-like protein 1, Neural visinin-like protein 3, NVL-3, NVP-3, Visinin-like protein 3, VILIP-3, Hpcal1
Format	Liquid. Purified antibody supplied in 1x PBS buffer with 0.09% (w/v) sodium azide and 2% sucrose.
Reconstitution & Storage	Add 50 ul of distilled water. Final anti-Hpcal1 antibody concentration is 1 mg/ml in PBS buffer with 2% sucrose. For longer periods of storage, store at 20°C. Avoid repeat freeze-thaw cycles.
Precautions	Hpcal1 antibody - C-terminal region is for research use only and not for use in diagnostic or therapeutic procedures.

Protein Information

Name	Hpcal1
Function	May be involved in the calcium-dependent regulation of rhodopsin phosphorylation.
Cellular Location	Membrane {ECO:0000250 UniProtKB:P37235}; Lipid- anchor {ECO:0000250 UniProtKB:P37235}

Images



WB Suggested Anti-Hpcal1 Antibody Titration: 1.0 µg/ml
Positive Control: Mouse Heart

Please note: All products are 'FOR RESEARCH USE ONLY. NOT FOR USE IN DIAGNOSTIC OR THERAPEUTIC PROCEDURES'.