

IRF5 antibody - N-terminal region

Rabbit Polyclonal Antibody

Catalog # AI11366

Product Information

Application	WB
Primary Accession	Q13568
Other Accession	NM_032643 , NP_116032
Reactivity	Human, Mouse, Rat, Rabbit, Zebrafish, Pig, Dog, Horse, Bovine
Predicted	Human, Mouse, Rat, Rabbit, Bovine
Host	Rabbit
Clonality	Polyclonal
Calculated MW	56044

Additional Information

Gene ID	3663
Alias Symbol	SLEB10
Other Names	Interferon regulatory factor 5, IRF-5, IRF5
Format	Liquid. Purified antibody supplied in 1x PBS buffer with 0.09% (w/v) sodium azide and 2% sucrose.
Reconstitution & Storage	Add 100 ul of distilled water. Final anti-IRF5 antibody concentration is 1 mg/ml in PBS buffer with 2% sucrose. For longer periods of storage, store at 20°C. Avoid repeat freeze-thaw cycles.
Precautions	IRF5 antibody - N-terminal region is for research use only and not for use in diagnostic or therapeutic procedures.

Protein Information

Name	IRF5 {ECO:0000303 PubMed:11303025, ECO:0000312 HGNC:HGNC:6120}
Function	Transcription factor that plays a critical role in innate immunity by activating expression of type I interferon (IFN) IFNA and IFNB and inflammatory cytokines downstream of endolysosomal toll-like receptors TLR7, TLR8 and TLR9 (PubMed: 11303025 , PubMed: 15695821 , PubMed: 22412986 , PubMed: 25326418 , PubMed: 32433612). Regulates the transcription of type I IFN genes (IFN-alpha and IFN-beta) and IFN- stimulated genes (ISG) by binding to an interferon-stimulated response element (ISRE) in their promoters (By similarity). Can efficiently activate both the IFN-beta (IFNB) and the IFN-alpha (IFNA) genes and mediate their induction downstream of the TLR-activated, MyD88- dependent pathway (By similarity). Key transcription factor regulating the IFN response during SARS-CoV-2 infection

(PubMed:[33440148](#)).

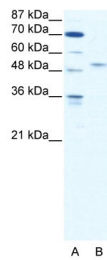
Cellular Location

Cytoplasm. Nucleus. Note=Shuttles between the nucleus and the cytoplasm: upon activation by the TLR adapter MYD88 and subsequent phosphorylation, translocates to the nucleus

References

Mancl,M.E., et al., (2005) J. Biol. Chem. 280 (22), 21078-21090
Reconstitution and Storage:For short term use, store at 2-8C up to 1 week. For long term storage, store at -20C in small aliquots to prevent freeze-thaw cycles.

Images



WB Suggested Anti-IRF5 Antibody Titration: 2.5µg/ml
ELISA Titer: 1:312500
Positive Control: HepG2 cell lysate

Please note: All products are 'FOR RESEARCH USE ONLY. NOT FOR USE IN DIAGNOSTIC OR THERAPEUTIC PROCEDURES'.