

MXD1 antibody - N-terminal region

Rabbit Polyclonal Antibody

Catalog # AI11369

Product Information

Application	WB
Primary Accession	Q0VFI9
Other Accession	NM_002357 , NP_002348
Reactivity	Human, Mouse, Rat, Rabbit, Zebrafish, Pig, Dog, Horse, Bovine, Sheep
Predicted	Human, Mouse, Rat, Rabbit, Zebrafish, Dog, Bovine
Host	Rabbit
Clonality	Polyclonal
Calculated MW	25297

Additional Information

Gene ID	779675
Alias Symbol	MAD, MAD1, MGC104659, BHLHC58
Other Names	Max dimerization protein 1, Max dimerizer 1, Protein MAD, mxd1, mad1
Format	Liquid. Purified antibody supplied in 1x PBS buffer with 0.09% (w/v) sodium azide and 2% sucrose.
Reconstitution & Storage	Add 50 ul of distilled water. Final anti-MXD1 antibody concentration is 1 mg/ml in PBS buffer with 2% sucrose. For longer periods of storage, store at 20°C. Avoid repeat freeze-thaw cycles.
Precautions	MXD1 antibody - N-terminal region is for research use only and not for use in diagnostic or therapeutic procedures.

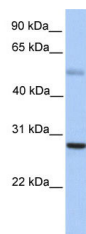
Protein Information

Name	mxd1
Synonyms	mad1
Function	Transcriptional repressor. MAD binds with MAX to form a sequence-specific DNA-binding protein complex which recognizes the core sequence 5'-CAC[GA]TG-3'. MAD thus antagonizes MYC transcriptional activity by competing for MAX (By similarity).
Cellular Location	Nucleus {ECO:0000255 PROSITE-ProRule:PRU00981}.

References

Rottmann,S., (2008) FASEB J. 22 (4), 1124-1134 Reconstitution and Storage:For short term use, store at 2-8C up to 1 week. For long term storage, store at -20C in small aliquots to prevent freeze-thaw cycles.

Images



WB Suggested Anti-MXD1 Antibody Titration: 0.2-1 µg/ml
Positive Control: Human Muscle

Please note: All products are 'FOR RESEARCH USE ONLY. NOT FOR USE IN DIAGNOSTIC OR THERAPEUTIC PROCEDURES'.