

Meis1 antibody - N-terminal region

Rabbit Polyclonal Antibody

Catalog # AI11371

Product Information

Application	WB
Primary Accession	Q60954
Other Accession	NM_010789 , NP_034919
Reactivity	Human, Mouse, Rat, Rabbit, Zebrafish, Dog, Horse, Bovine
Predicted	Human, Mouse, Rat, Rabbit, Zebrafish, Chicken, Dog, Horse, Bovine
Host	Rabbit
Clonality	Polyclonal
Calculated MW	43002

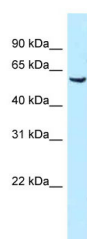
Additional Information

Gene ID	17268
Alias Symbol	C530044H18Rik, Evi8
Other Names	Homeobox protein Meis1, Myeloid ecotropic viral integration site 1, Meis1
Format	Liquid. Purified antibody supplied in 1x PBS buffer with 0.09% (w/v) sodium azide and 2% sucrose.
Reconstitution & Storage	Add 50 ul of distilled water. Final anti-Meis1 antibody concentration is 1 mg/ml in PBS buffer with 2% sucrose. For longer periods of storage, store at 20°C. Avoid repeat freeze-thaw cycles.
Precautions	Meis1 antibody - N-terminal region is for research use only and not for use in diagnostic or therapeutic procedures.

Protein Information

Name	Meis1
Function	Acts as a transcriptional regulator of PAX6. Also acts as a transcriptional activator of PF4 in complex with PBX1 or PBX2. Required for hematopoiesis, megakaryocyte lineage development and vascular patterning. May function as a cofactor for HOXA7 and HOXA9 in the induction of myeloid leukemias.
Cellular Location	Nucleus {ECO:0000255 PROSITE-ProRule:PRU00108, ECO:0000269 PubMed:10082572, ECO:0000269 PubMed:15882575}
Tissue Location	Expressed at high levels in the lung with lower levels detected in the heart and brain. Expressed in pancreatic islets (beta-cells and non-beta-cells) (PubMed:21059917)

Images



WB Suggested Anti-Meis1 Antibody Titration: 1.0 μ g/ml
Positive Control: Mouse Kidney

Please note: All products are 'FOR RESEARCH USE ONLY. NOT FOR USE IN DIAGNOSTIC OR THERAPEUTIC PROCEDURES'.