

# SMARCD2 antibody - C-terminal region

Rabbit Polyclonal Antibody

Catalog # AI11379

## Product Information

---

<b>Application</b>	WB, IHC
<b>Primary Accession</b>	<a href="#">Q92925-2</a>
<b>Other Accession</b>	<a href="#">NM_003077</a> , <a href="#">NP_003068</a>
<b>Reactivity</b>	Human, Mouse, Rat, Rabbit, Zebrafish, Pig, Dog, Horse, Bovine
<b>Predicted</b>	Human, Mouse, Rabbit, Zebrafish, Pig, Chicken, Horse
<b>Host</b>	Rabbit
<b>Clonality</b>	Polyclonal
<b>Calculated MW</b>	54 KDa

## Additional Information

---

<b>Alias Symbol</b>	BAF60B, CRACD2, PRO2451, Rsc6p
<b>Format</b>	Liquid. Purified antibody supplied in 1x PBS buffer with 0.09% (w/v) sodium azide and 2% sucrose.
<b>Reconstitution &amp; Storage</b>	Add 50 ul of distilled water. Final anti-SMARCD2 antibody concentration is 1 mg/ml in PBS buffer with 2% sucrose. For longer periods of storage, store at 20°C. Avoid repeat freeze-thaw cycles.
<b>Precautions</b>	SMARCD2 antibody - C-terminal region is for research use only and not for use in diagnostic or therapeutic procedures.

## Protein Information

---

## References

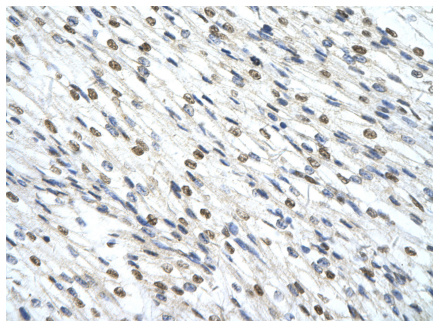
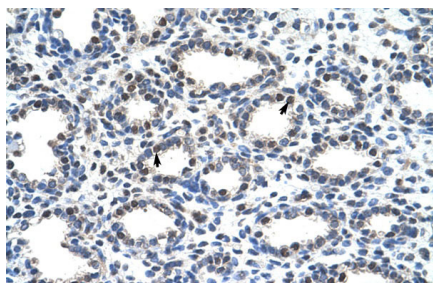
---

Lehner, B. (2004) Genome Res. 14 (7), 1315-1323  
Reconstitution and Storage: For short term use, store at 2-8C up to 1 week. For long term storage, store at -20C in small aliquots to prevent freeze-thaw cycles.

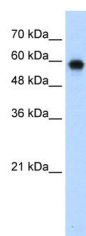
## Images

---

Rabbit Anti-SMARCD2 Antibody  
Paraffin Embedded Tissue: Human Lung  
Cellular Data: Alveolar cells  
Antibody Concentration: 16 µg/ml  
Magnification: 400X



Rabbit Anti-SMARCD2 Antibody  
 Paraffin Embedded Tissue: Human cardiac cell  
 Cellular Data: Epithelial cells of renal tubule  
 Antibody Concentration: 4.0-8.0 µg/ml  
 Magnification: 400X



WB Suggested Anti-SMARCD2 Antibody Titration: 0.2-1 µg/ml  
 Positive Control: Jurkat cell lysate  
 SMARCD2 is supported by BioGPS gene expression data to be expressed in Jurkat

Please note: All products are 'FOR RESEARCH USE ONLY. NOT FOR USE IN DIAGNOSTIC OR THERAPEUTIC PROCEDURES'.