

# NR2C1 antibody - N-terminal region

Rabbit Polyclonal Antibody

Catalog # AI11386

## Product Information

---

<b>Application</b>	WB, IHC
<b>Primary Accession</b>	<a href="#">Q15626</a>
<b>Other Accession</b>	<a href="#">NM_001032287</a> , <a href="#">NP_001027458</a>
<b>Reactivity</b>	Human, Mouse, Rat, Rabbit, Zebrafish, Pig, Dog, Horse, Bovine
<b>Predicted</b>	Human, Mouse, Rat, Rabbit, Pig, Dog, Horse
<b>Host</b>	Rabbit
<b>Clonality</b>	Polyclonal
<b>Calculated MW</b>	51 KDa

## Additional Information

---

<b>Alias Symbol</b>	TR2, TR2-11
<b>Format</b>	Liquid. Purified antibody supplied in 1x PBS buffer with 0.09% (w/v) sodium azide and 2% sucrose.
<b>Reconstitution &amp; Storage</b>	Add 50 ul of distilled water. Final anti-NR2C1 antibody concentration is 1 mg/ml in PBS buffer with 2% sucrose. For longer periods of storage, store at 20°C. Avoid repeat freeze-thaw cycles.
<b>Precautions</b>	NR2C1 antibody - N-terminal region is for research use only and not for use in diagnostic or therapeutic procedures.

## Protein Information

---

## References

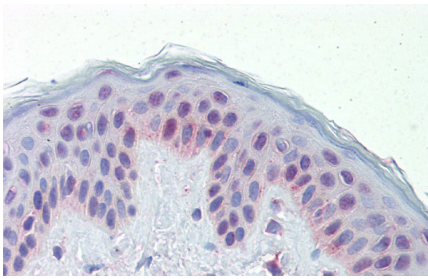
---

Lin,Y.L., (2006) Biochem. Biophys. Res. Commun. 350 (2), 430-436 Reconstitution and Storage:For short term use, store at 2-8C up to 1 week. For long term storage, store at -20C in small aliquots to prevent freeze-thaw cycles.

## Images

---

Immunohistochemistry with Human Skin lysate tissue at an antibody concentration of 5.0µg/ml using anti-NR2C1 antibody (AI11386)



WB Suggested Anti-NR2C1 Antibody Titration: 0.2-1  $\mu$ g/ml  
ELISA Titer: 1:312500  
Positive Control: 721\_B cell lysate

Please note: All products are 'FOR RESEARCH USE ONLY. NOT FOR USE IN DIAGNOSTIC OR THERAPEUTIC PROCEDURES'.