

NR2C1 antibody - C-terminal region

Rabbit Polyclonal Antibody

Catalog # AI11387

Product Information

Application	WB, IHC
Primary Accession	Q15625
Other Accession	NM_003297 , NP_003288
Reactivity	Human, Mouse, Rat, Zebrafish, Pig, Dog, Horse, Bovine
Predicted	Human, Mouse, Rat, Rabbit, Zebrafish, Pig, Bovine
Host	Rabbit
Clonality	Polyclonal
Calculated MW	67 kDa

Additional Information

Alias Symbol	TR2, TR2-11
Format	Liquid. Purified antibody supplied in 1x PBS buffer with 0.09% (w/v) sodium azide and 2% sucrose.
Reconstitution & Storage	Add 50 ul of distilled water. Final anti-NR2C1 antibody concentration is 1 mg/ml in PBS buffer with 2% sucrose. For longer periods of storage, store at 20°C. Avoid repeat freeze-thaw cycles.
Precautions	NR2C1 antibody - C-terminal region is for research use only and not for use in diagnostic or therapeutic procedures.

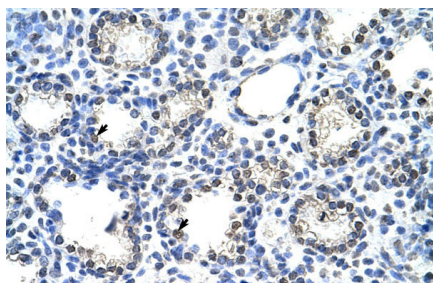
Protein Information

References

Li, G., (2003) Biochem. Biophys. Res. Commun. 310 (2), 384-390
Reconstitution and Storage: For short term use, store at 2-8°C up to 1 week. For long term storage, store at -20°C in small aliquots to prevent freeze-thaw cycles.

Images

Human Lung



WB Suggested Anti-NR2C1 Antibody Titration: 0.1 µg/ml
Positive Control: HepG2 cell lysate
NR2C1 is strongly supported by BioGPS gene expression data to be expressed in Human HepG2 cells

Please note: All products are 'FOR RESEARCH USE ONLY. NOT FOR USE IN DIAGNOSTIC OR THERAPEUTIC PROCEDURES'.