

Creg1 antibody - C-terminal region

Rabbit Polyclonal Antibody

Catalog # AI11407

Product Information

Application	WB
Primary Accession	O88668
Other Accession	NM_011804 , NP_035934
Reactivity	Human, Mouse, Rat, Rabbit, Pig, Dog, Horse, Bovine
Predicted	Human, Rat, Rabbit, Pig, Dog, Horse
Host	Rabbit
Clonality	Polyclonal
Calculated MW	24452

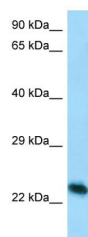
Additional Information

Gene ID	433375
Alias Symbol	AA755314, Creg
Other Names	Protein CREG1, Cellular repressor of E1A-stimulated genes 1, Creg1, Creg
Format	Liquid. Purified antibody supplied in 1x PBS buffer with 0.09% (w/v) sodium azide and 2% sucrose.
Reconstitution & Storage	Add 50 ul of distilled water. Final anti-Creg1 antibody concentration is 1 mg/ml in PBS buffer with 2% sucrose. For longer periods of storage, store at 20°C. Avoid repeat freeze-thaw cycles.
Precautions	Creg1 antibody - C-terminal region is for research use only and not for use in diagnostic or therapeutic procedures.

Protein Information

Name	Creg1
Synonyms	Creg
Function	May contribute to the transcriptional control of cell growth and differentiation. Antagonizes transcriptional activation and cellular transformation by the adenovirus E1A protein. The transcriptional control activity of cell growth requires interaction with IGF2R (By similarity).
Cellular Location	Secreted.
Tissue Location	Widely expressed..

Images



Host: Rabbit
Target Name: Creg1
Antibody Dilution: 1.0µg/ml
Sample Tissue: Mouse Lung

Please note: All products are 'FOR RESEARCH USE ONLY. NOT FOR USE IN DIAGNOSTIC OR THERAPEUTIC PROCEDURES'.