

TRIP10 antibody - middle region

Rabbit Polyclonal Antibody

Catalog # AI11420

Product Information

Application	WB
Primary Accession	B2R8A6
Other Accession	NM_004240 , NP_004231
Reactivity	Human, Mouse, Rat, Rabbit, Zebrafish, Pig, Dog, Horse, Bovine
Predicted	Pig, Bovine
Host	Rabbit
Clonality	Polyclonal
Calculated MW	62 KDa

Additional Information

Alias Symbol	CIP4, HSTP, STOT, STP
Format	Liquid. Purified antibody supplied in 1x PBS buffer with 0.09% (w/v) sodium azide and 2% sucrose.
Reconstitution & Storage	Add 50 ul of distilled water. Final anti-TRIP10 antibody concentration is 1 mg/ml in PBS buffer with 2% sucrose. For longer periods of storage, store at 20°C. Avoid repeat freeze-thaw cycles.
Precautions	TRIP10 antibody - middle region is for research use only and not for use in diagnostic or therapeutic procedures.

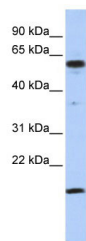
Protein Information

References

Banerjee,P.P., (2007) J. Exp. Med. 204 (10), 2305-2320 Reconstitution and Storage:For short term use, store at 2-8C up to 1 week. For long term storage, store at -20C in small aliquots to prevent freeze-thaw cycles.

Images

WB Suggested Anti-TRIP10 Antibody Titration: 0.2-1 µg/ml
ELISA Titer: 1:1562500
Positive Control: Jurkat cell lysate



Please note: All products are 'FOR RESEARCH USE ONLY. NOT FOR USE IN DIAGNOSTIC OR THERAPEUTIC PROCEDURES'.