

NRF1 antibody - C-terminal region

Rabbit Polyclonal Antibody

Catalog # AI11426

Product Information

Application	WB, IHC
Primary Accession	Q96AN2
Other Accession	NM_005011 , NP_005002
Reactivity	Human, Rat
Predicted	Human
Host	Rabbit
Clonality	Polyclonal
Calculated MW	56 kDa

Additional Information

Alias Symbol	ALPHA-PAL, EWG
Format	Liquid. Purified antibody supplied in 1x PBS buffer with 0.09% (w/v) sodium azide and 2% sucrose.
Reconstitution & Storage	Add 100 ul of distilled water. Final anti-NRF1 antibody concentration is 1 mg/ml in PBS buffer with 2% sucrose. For longer periods of storage, store at 20°C. Avoid repeat freeze-thaw cycles.
Precautions	NRF1 antibody - C-terminal region is for research use only and not for use in diagnostic or therapeutic procedures.

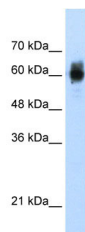
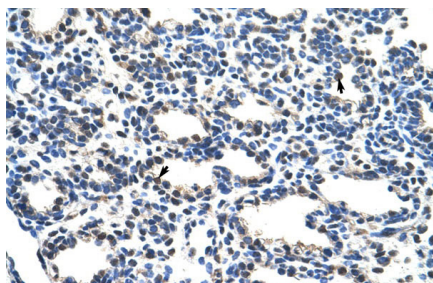
Protein Information

References

Chang, W.T., (2005) Biochem. Biophys. Res. Commun. 334 (1), 199-206
Reconstitution and Storage: For short term use, store at 2-8°C up to 1 week. For long term storage, store at -20°C in small aliquots to prevent freeze-thaw cycles.

Images

Human Lung



WB Suggested Anti-NRF1 Antibody Titration: 1.25µg/ml
ELISA Titer: 1:1562500
Positive Control: Transfected 293T

Please note: All products are 'FOR RESEARCH USE ONLY. NOT FOR USE IN DIAGNOSTIC OR THERAPEUTIC PROCEDURES'.