

ATF1 antibody - N-terminal region

Rabbit Polyclonal Antibody

Catalog # AI11431

Product Information

Application	WB
Primary Accession	P18846
Other Accession	NM_005171 , NP_005162
Reactivity	Human, Mouse, Rat, Rabbit, Dog, Horse, Bovine, Sheep
Predicted	Human, Mouse, Rat, Rabbit, Dog, Bovine
Host	Rabbit
Clonality	Polyclonal
Calculated MW	29233

Additional Information

Gene ID	466
Alias Symbol	TREB36, EWS-ATF1, FUS/ATF-1
Other Names	Cyclic AMP-dependent transcription factor ATF-1, cAMP-dependent transcription factor ATF-1, Activating transcription factor 1, Protein TREB36, ATF1
Format	Liquid. Purified antibody supplied in 1x PBS buffer with 0.09% (w/v) sodium azide and 2% sucrose.
Reconstitution & Storage	Add 50 ul of distilled water. Final anti-ATF1 antibody concentration is 1 mg/ml in PBS buffer with 2% sucrose. For longer periods of storage, store at 20°C. Avoid repeat freeze-thaw cycles.
Precautions	ATF1 antibody - N-terminal region is for research use only and not for use in diagnostic or therapeutic procedures.

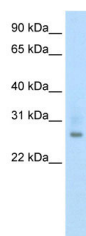
Protein Information

Name	ATF1
Function	This protein binds the cAMP response element (CRE) (consensus: 5'-GTGACGT[AC][AG]-3'), a sequence present in many viral and cellular promoters. Binds to the Tax-responsive element (TRE) of HTLV-I. Mediates PKA-induced stimulation of CRE-reporter genes. Represses the expression of FTH1 and other antioxidant detoxification genes. Triggers cell proliferation and transformation.
Cellular Location	Nucleus.

References

Somers,G.R., et al., (2005) Am. J. Surg. Pathol. 29 (12), 1673-1679
Reconstitution and Storage:For short term use, store at 2-8C up to 1 week. For long term storage, store at -20C in small aliquots to prevent freeze-thaw cycles.

Images



WB Suggested Anti-ATF1 Antibody Titration: 0.2-1 µg/ml
ELISA Titer: 1:312500
Positive Control: Human Thymus

Please note: All products are 'FOR RESEARCH USE ONLY. NOT FOR USE IN DIAGNOSTIC OR THERAPEUTIC PROCEDURES'.