

# Elk3 antibody - N-terminal region

Rabbit Polyclonal Antibody

Catalog # AI11435

## Product Information

---

<b>Application</b>	WB
<b>Primary Accession</b>	<a href="#">P41971</a>
<b>Other Accession</b>	<a href="#">NM_013508</a> , <a href="#">NP_038536</a>
<b>Reactivity</b>	Human, Mouse, Rat, Rabbit, Zebrafish, Dog, Horse, Bovine
<b>Predicted</b>	Human, Mouse, Rat, Rabbit, Zebrafish, Chicken, Bovine
<b>Host</b>	Rabbit
<b>Clonality</b>	Polyclonal
<b>Calculated MW</b>	44414

## Additional Information

---

<b>Gene ID</b>	13713
<b>Alias Symbol</b> <b>Other Names</b>	D430049E23Rik, Erp, Etrp, Net, Sap-2 ETS domain-containing protein Elk-3, ETS-related protein ERP, ETS-related protein NET, Elk3, Erp, Net
<b>Format</b>	Liquid. Purified antibody supplied in 1x PBS buffer with 0.09% (w/v) sodium azide and 2% sucrose.
<b>Reconstitution &amp; Storage</b>	Add 50 ul of distilled water. Final anti-Elk3 antibody concentration is 1 mg/ml in PBS buffer with 2% sucrose. For longer periods of storage, store at 20°C. Avoid repeat freeze-thaw cycles.
<b>Precautions</b>	Elk3 antibody - N-terminal region is for research use only and not for use in diagnostic or therapeutic procedures.

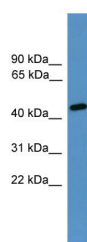
## Protein Information

---

<b>Name</b>	Elk3
<b>Synonyms</b>	Erp, Net
<b>Function</b>	May be a negative regulator of transcription, but can activate transcription when coexpressed with Ras, Src or Mos. Forms a ternary complex with the serum response factor and the ETS and SRF motifs of the Fos serum response element.
<b>Cellular Location</b>	Nucleus.
<b>Tissue Location</b>	Heart, liver, lung, kidney and muscle.

## Images

---



WB Suggested Anti-Elk3 Antibody Titration: 0.2-1  $\mu$ g/ml  
ELISA Titer: 1:1562500  
Positive Control: Mouse Small Intestine

Please note: All products are 'FOR RESEARCH USE ONLY. NOT FOR USE IN DIAGNOSTIC OR THERAPEUTIC PROCEDURES'.