

HCFC1 antibody - N-terminal region

Rabbit Polyclonal Antibody

Catalog # AI11436

Product Information

Application	WB
Primary Accession	P51610-3
Other Accession	NM_005334 , AAH63435
Reactivity	Human, Mouse, Rat, Rabbit, Zebrafish, Pig, Dog, Horse, Bovine
Predicted	Human, Mouse, Rat, Rabbit, Zebrafish, Pig, Bovine
Host	Rabbit
Clonality	Polyclonal
Calculated MW	45 KDa

Additional Information

Alias Symbol	CFF, HCF1, HFC1, VCAF, HCF-1
Format	Liquid. Purified antibody supplied in 1x PBS buffer with 0.09% (w/v) sodium azide and 2% sucrose.
Reconstitution & Storage	Add 100 ul of distilled water. Final anti-HCFC1 antibody concentration is 1 mg/ml in PBS buffer with 2% sucrose. For longer periods of storage, store at 20°C. Avoid repeat freeze-thaw cycles.
Precautions	HCFC1 antibody - N-terminal region is for research use only and not for use in diagnostic or therapeutic procedures.

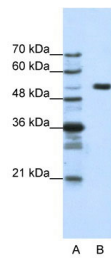
Protein Information

References

Director MGC Project, (2003) Direct SubmissionReconstitution and Storage:For short term use, store at 2-8C up to 1 week. For long term storage, store at -20C in small aliquots to prevent freeze-thaw cycles.

Images

WB Suggested Anti-HCFC1 Antibody Titration: 1.25µg/ml
Positive Control: HepG2 cell lysate
HCFC1 is strongly supported by BioGPS gene expression data to be expressed in Human HepG2 cells



Please note: All products are 'FOR RESEARCH USE ONLY. NOT FOR USE IN DIAGNOSTIC OR THERAPEUTIC PROCEDURES'.